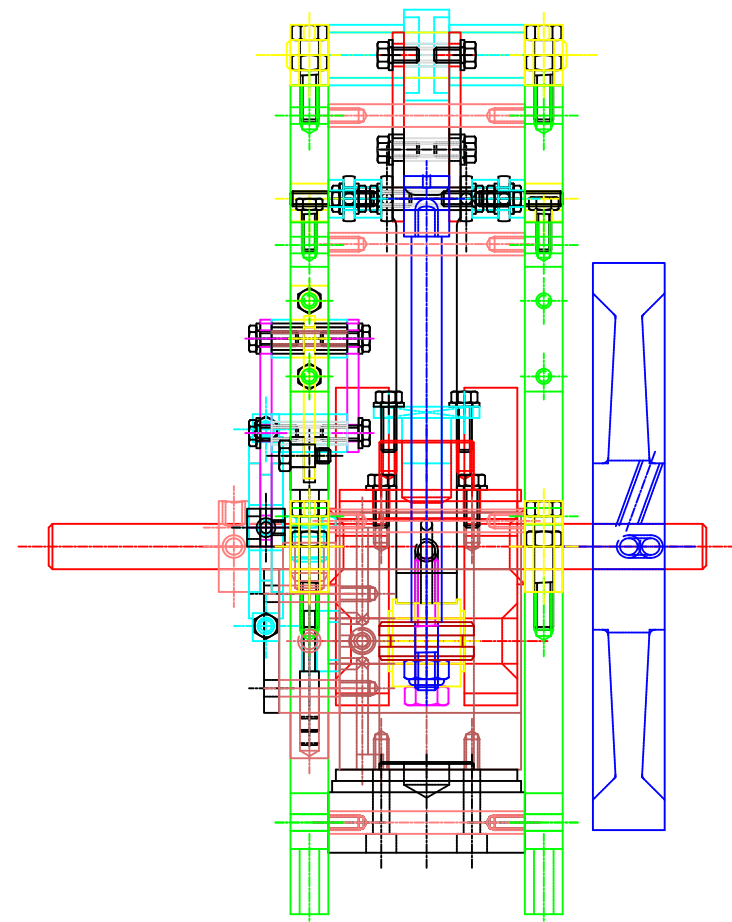


FRONT VIEW



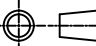
RIGHT SIDE VIEW

Original engine "Gerry's Beam Engine" created by OldBoatGuy. Redrawn in Metric by Ken I. Transposed onto Production Drawings from the AutoCAD file by Andrew Pullin.

Thanks to www.homemodelenginemachinist.com

TOLERANCES :
ALL DIMENSIONS ARE UNTOLERANCED. MAKE ALLOWANCES FOR LIMITS & FITS.

AS 1100.201

 3rd ANGLE PROJECTION

MATERIALS
Mild Steel, F/M Brass, Phos Bronze
H/T Aluminium, Stainless Steel,
3.0 Silver Steel, Gauge Steel,
Key Steel

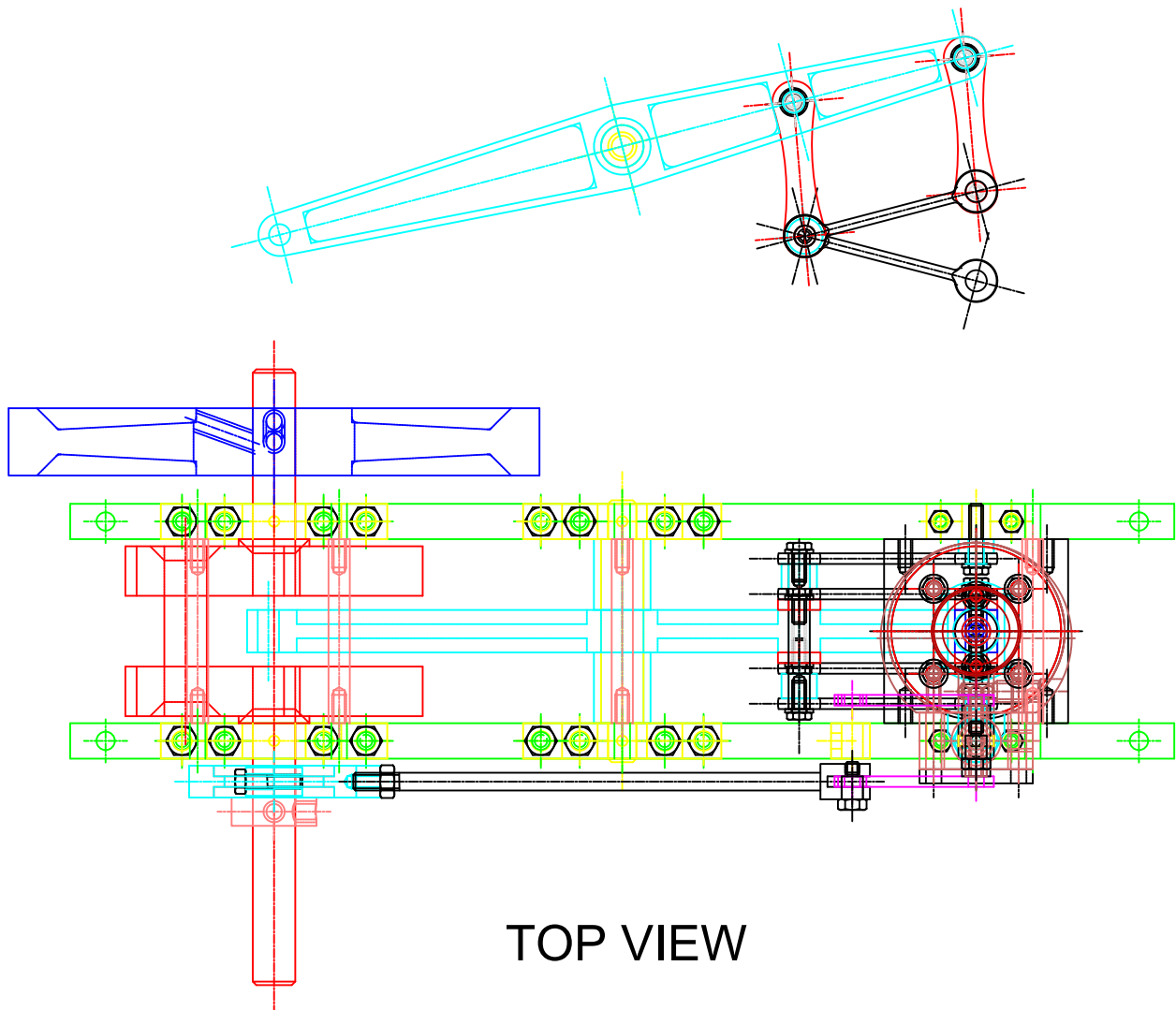
FINISH

TITLE		
Gerry's Beam Engine - Metric Version		
CODE IDENTIFICATION NO	DRAWING NO.	SHEET SIZE
BE01	ASSEMBLY DRAWING A	
SCALE :	1 : 1	

PRODUCED BY AN AUTODESK STUDENT VERSION

PRODUCED BY AN AUTODESK STUDENT VERSION

BEAM FRONT VIEW



TOP VIEW

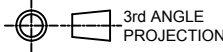
Parts List		
Drawing #	Description	Quantity
BE03	Beam Frame Plate	2
BE05	Flywheel	1
BE06	Shaft & Flange	1
BE07	Rocker Beam	1
BE08	Conrod & Big End	1
BE09	Cylinder	1
BE10	Cylinder Base	1
BE11	Cylinder Head	1
BE12	Cylinder Gland	1
BE13	Piston & Piston Ring	1
BE14	Cylinder Rod	1
BE15	Valve Stem	1
BE16	Valve Link Rod	1
BE17	Steam Chest	1
BE18	Steam Chest Cover	1
BE19	Valve	1
BE20	Valve Stem Gland	1
BE21	Eccentric Boss	1
BE22	Eccentric Big End	1
BE23	Clevis Pin	2
BE24	Crank Bearing Caps	2
BE25	Beam Fulcrum Bearing	2
BE26	Ground Link Trunion	2
BE27	Ground Bellcrank Trunion	1
BE28	Fulcrum Pin	1
BE29	Beam Fulcrum Spacer	2
BE30	Ground Link Inboard Spacer	2
BE31	Ground Link Trunion Bush	2
BE32	Upper Bellcrank Spacers	2
BE33	Middle Bellcrank Space	2
BE34	Outer Bellcrank Spacer	2
BE35	Wrist Pins	3
BE36	Bell Crank Pins	3
BE37	Conrod Wrist Pin	1
BE38	Groundlink Inboard Lowert Pin	1
BE39	Frame Tiebars	5
BE40	G-Link Vertical Parallel Links	4
BE41	Grounding Links	4
BE42	Bellcrank - Valve Stem Link	1
BE43	Bellcrank - Front	1
BE44	Bellcrank - Rear	1
BE45	Bolts - Various	70

Original engine "Gerry's Beam Engine" created by OldBoatGuy. Redrawn in Metric by Ken I. Transposed onto Production Drawings from the AutoCAD file by Andrew Pullin.

Thanks to www.homemodelenginemachinist.com

TOLERANCES :
ALL DIMENSIONS ARE UNTOLERANCED. MAKE ALLOWANCES FOR LIMITS & FITS.

AS 1100.201



MATERIALS
Mild Steel, F/M Brass, Phos Bronze
H/T Aluminium, Stainless Steel,
3.0 Silver Steel, Gauge Steel,
Key Steel

FINISH

TITLE

Gerry's Beam Engine - Metric Version

CODE IDENTIFICATION NO

BE02

SCALE :

1 : 1

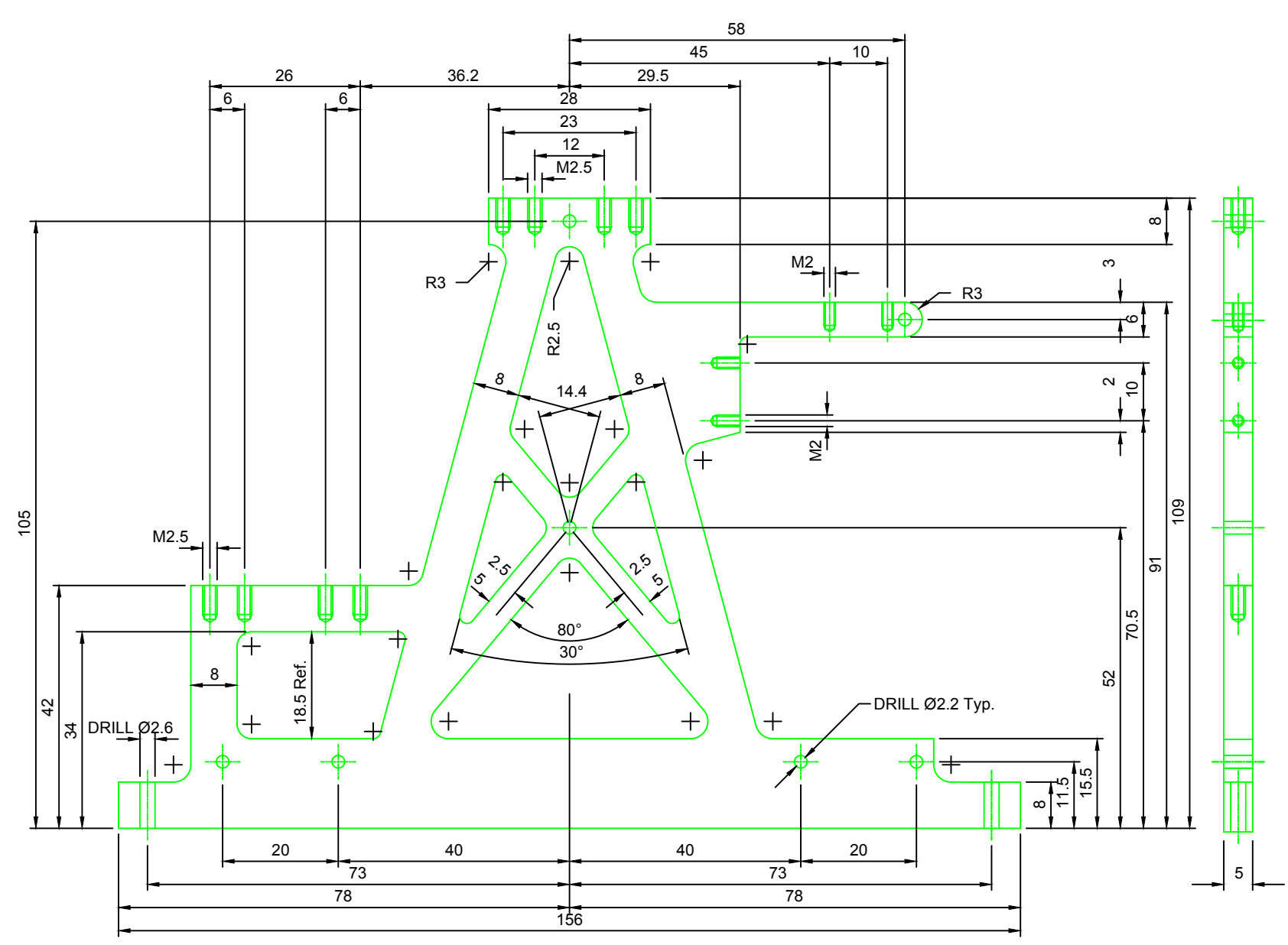
DRAWING NO.

ASSEMBLY DRAWING B

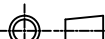
SHEET SIZE

A3

A
B
C
D
E
F



TIP: MOST 1200 DPI PRINTERS (OR BETTER) CAN PRINT MORE ACCURATELY THAN YOU CAN MARK OUT
MAKE A 1:1 PRINT OUT AND STICK IT WITH SPRAY ADHESIVE - SAVES ON MARKING OUT.
ALTERNATIVELY LIFT OUTLINE DATA FROM THE LAYER "FRAME" FOR LAZER CUTTING.
SEE DRILLED HOLE DRAWING FOR DETAILS OF RADII & DRILLING OPTION

ALL DIMENSIONS IN MILLIMETERS. DO NOT SCALE	TOLERANCES : ALL DIMENSIONS ARE UNTOLERANCED. MAKE ALLOWANCES FOR LIMITS & FITS.	 3rd ANGLE PROJECTION				
		MATERIALS H/T ALUMINIUM				
		FINISH	TITLE Gerry's Beam Engine - Metric Version			
		AS 1100.201	CODE IDENTIFICATION NO BE03	DRAWING NO. DETAIL - BEAM FRAME PLATE	SHEET SIZE A3	
	SCALE : 1 : 1		2 REQUIRED			

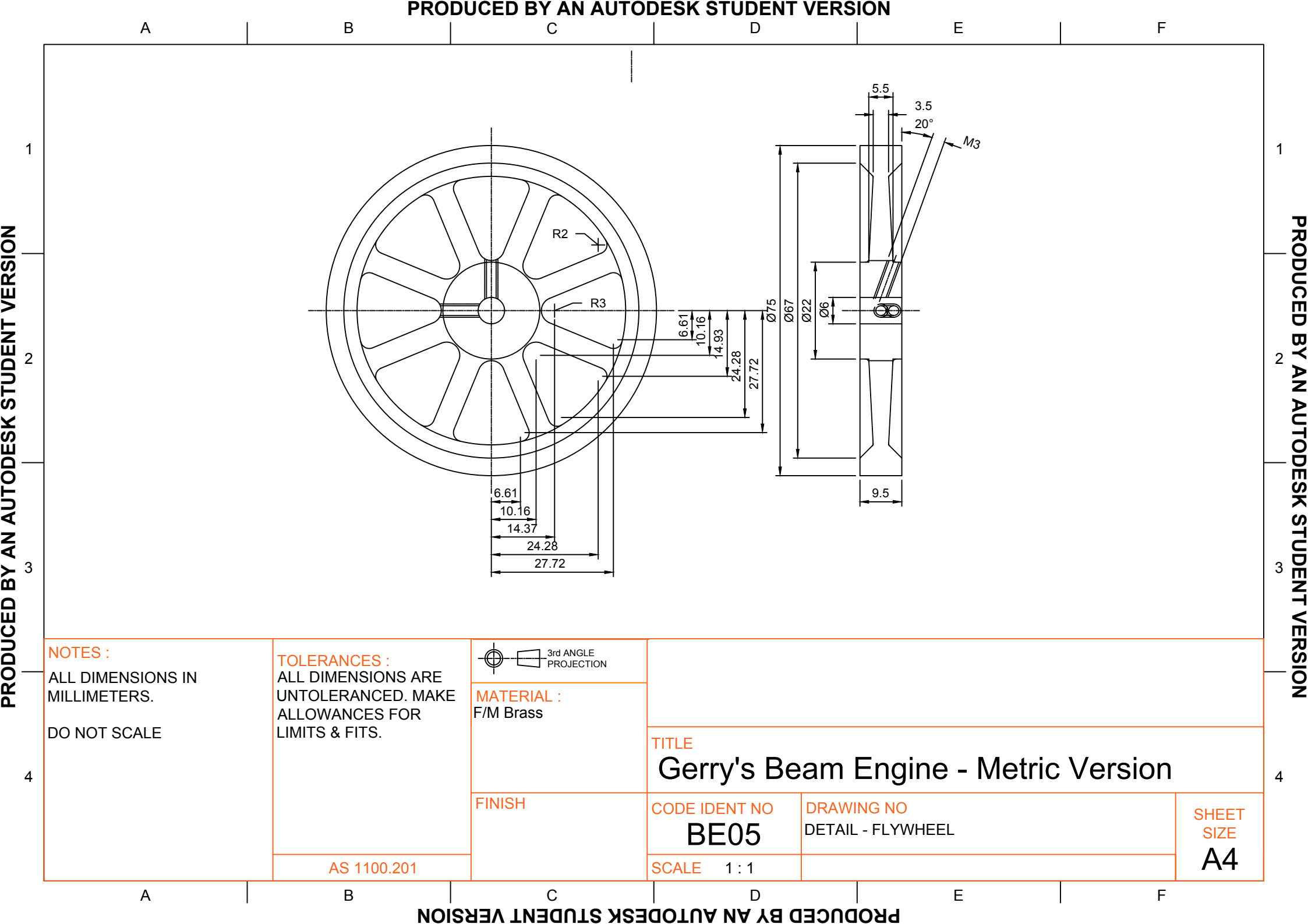


DO NOT SCALE

AS 1100.201



SCALE : 1 : 1



A

B

C

D

E

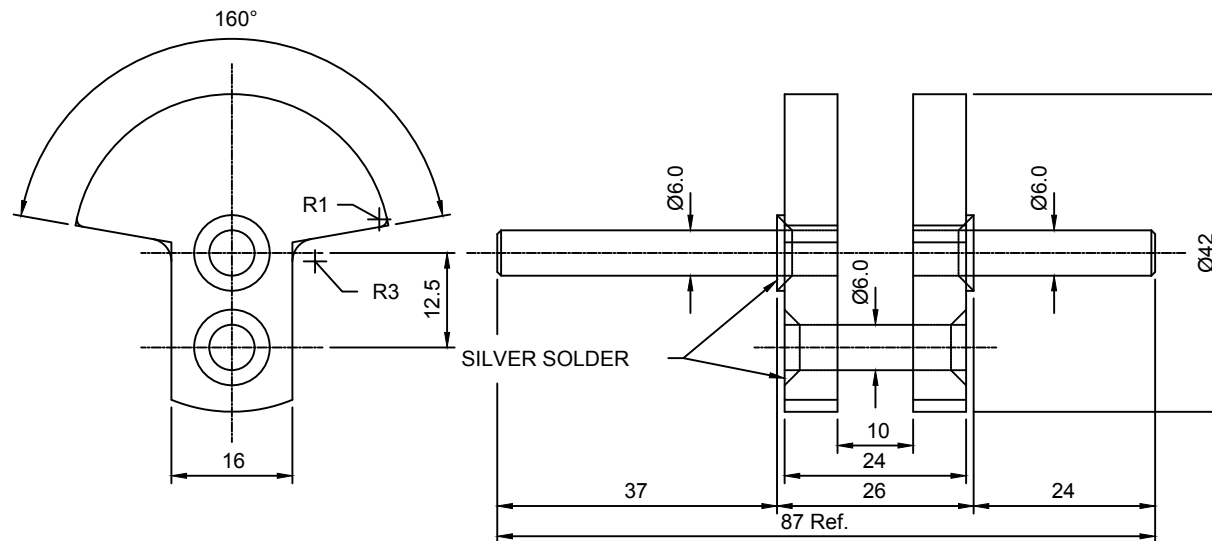
F

1

2

3

4



PRESS FIT ASSEMBLY AND SILVER SOLDER.

MAKE CENTRE SHAFT FULL LENGTH AND REMOVE PORTION BETWEEN FLANGES AFTER SILVER SOLDERING
MAKE FLANGE O/SIZE, CONTROL 10mm GAP DURING SOLDERING AND FINISH MACHINE.**NOTES :**ALL DIMENSIONS IN
MILLIMETERS.

DO NOT SCALE

TOLERANCES :ALL DIMENSIONS ARE
UNTOLERANCED. MAKE
ALLOWANCES FOR
LIMITS & FITS.

AS 1100.201

3rd ANGLE
PROJECTION**MATERIAL :**SHAFTS - SILVER
STEEL
FLANGES - F/M BRASS**FINISH****TITLE**

Gerry's Beam Engine - Metric Version

CODE IDENT NO

BE06

SCALE

1 : 1

DRAWING NO

DETAIL - SHAFT AND FLANGE

SHEET
SIZE

A4

A

B

C

D

E

F

1

2

3

4

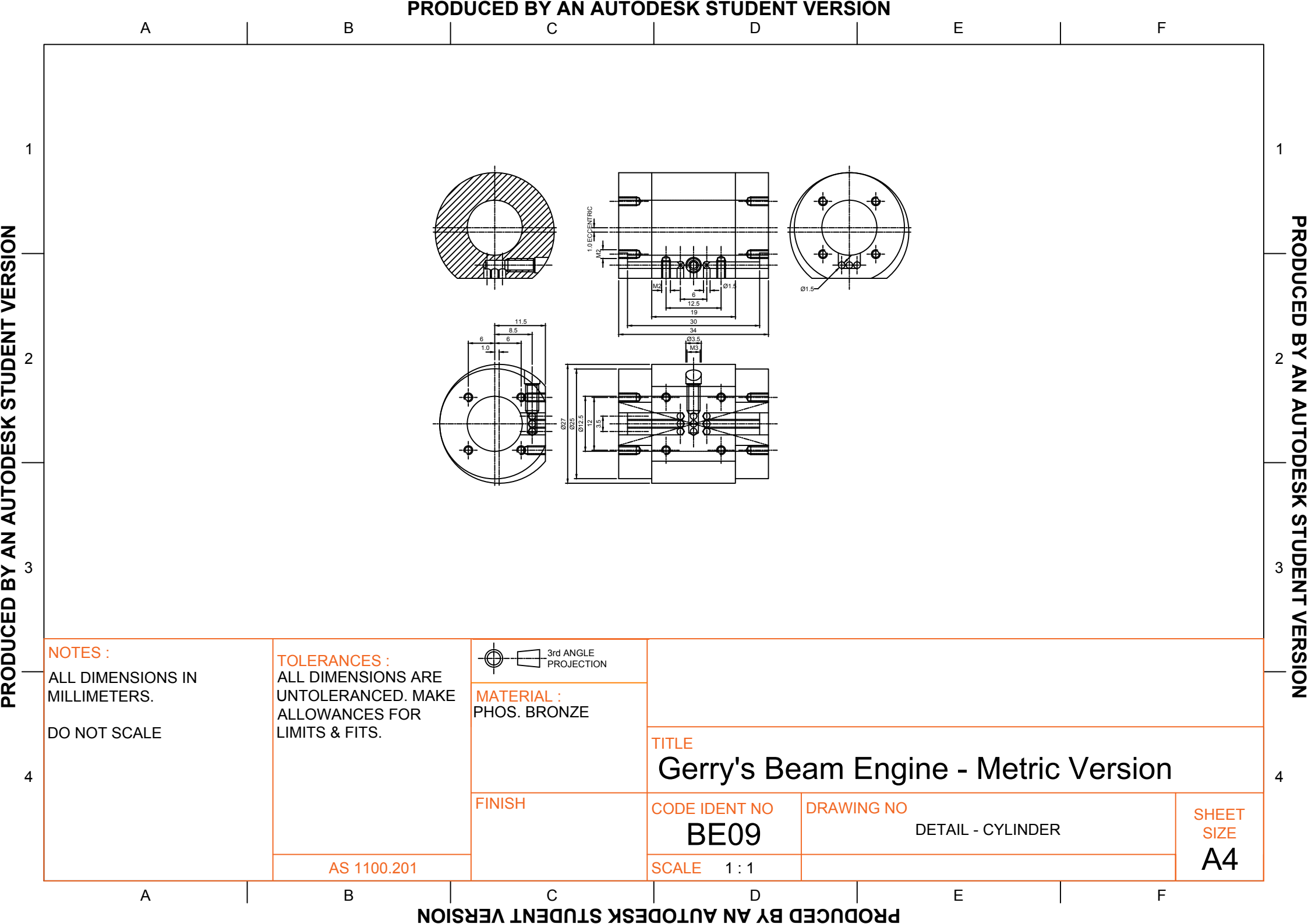


AS 1100.201

PRODUCED BY AN AUTODESK STUDENT VERSION

F

4



A

B

C

D

E

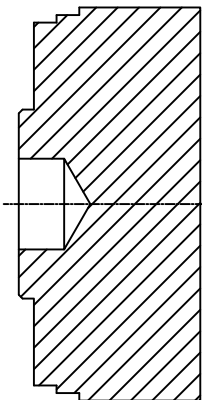
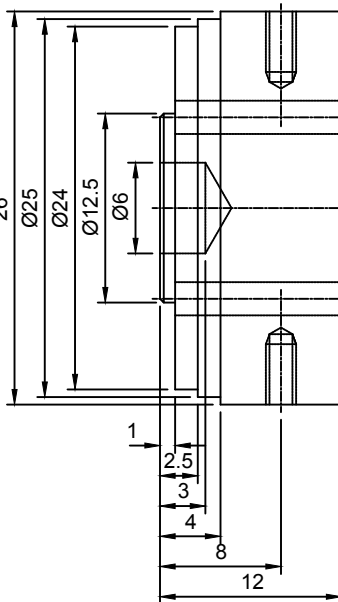
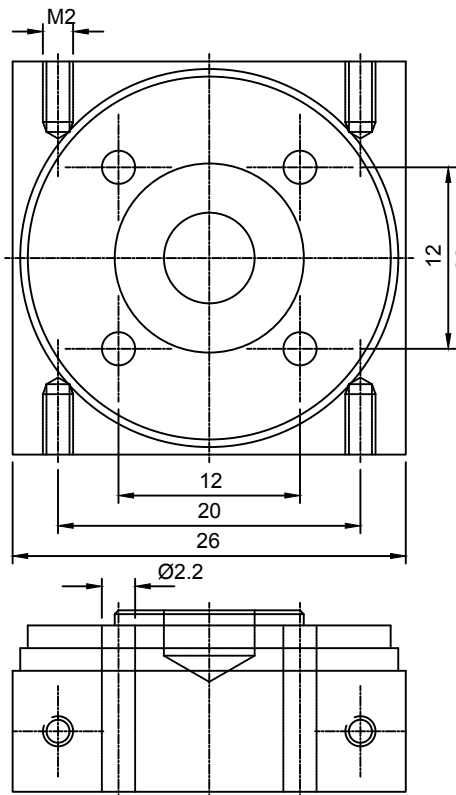
F

1

2

3

4



1

2

3

4

NOTES :
ALL DIMENSIONS IN
MILLIMETERS.

TOLERANCES :
ALL DIMENSIONS ARE
UNTOLERANCED. MAKE
ALLOWANCES FOR
LIMITS & FITS.



MATERIAL :
F/M BRASS
(Ø37 Ref. STOCK)

FINISH

AS 1100.201

TITLE

Gerry's Beam Engine - Metric Version

CODE IDENT NO

BE10

SCALE 2 : 1

DRAWING NO

DETAIL - CYLINDER BASE

NOTE SCALE FACTOR

SHEET
SIZE
A4

A

B

C

D

E

F



NOTE SCALE FACTOR

A

B

C

D

E

F

1

2

3

4

1

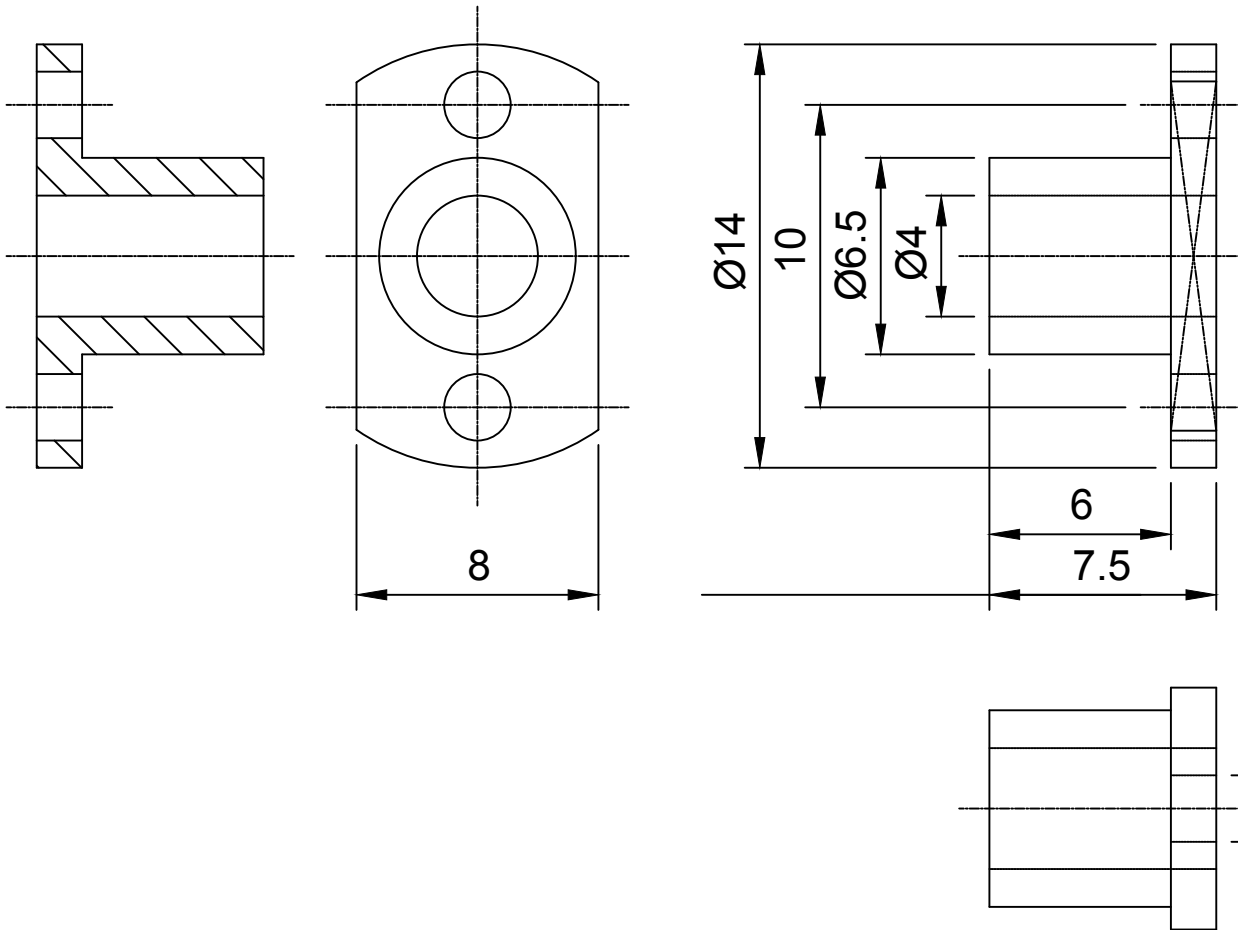
2

3

4

PRODUCED BY AN AUTODESK STUDENT VERSION

PRODUCED BY AN AUTODESK STUDENT VERSION



NOTES :
ALL DIMENSIONS IN
MILLIMETERS.

TOLERANCES :
ALL DIMENSIONS ARE
UNTOLERANCED. MAKE
ALLOWANCES FOR
LIMITS & FITS.



3rd ANGLE
PROJECTION

MATERIAL :
F/M BRASS

FINISH

AS 1100.201

TITLE

Gerry's Beam Engine - Metric Version

CODE IDENT NO

BE12

SCALE

4 : 1

DRAWING NO

DETAIL - CYLINDER GLAND

NOTE SCALE FACTOR

SHEET
SIZE

A4

A

B

C

D

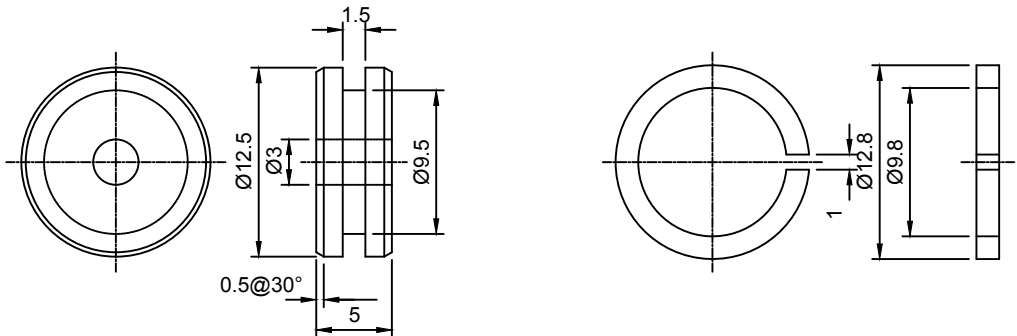
E

F

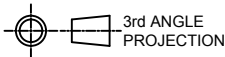
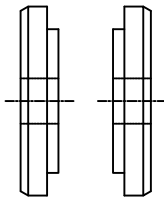
PISTON RING

Mat'l:- ACETAL

FOR COMP. AIR USE.
FOR STEAM USE CAST IRON



MAKE PISTON IN TWO PARTS FOR C.I. RING / STEAM USE



MATERIAL :
PISTON :
STAINLESS STEEL
PISTON RING :
CAST IRON (STEAM)
ACETAL (COMP. AIR)

FINISH

NOTES :
ALL DIMENSIONS IN
MILLIMETERS.

TOLERANCES :
ALL DIMENSIONS ARE
UNTOLERANCED. MAKE
ALLOWANCES FOR
LIMITS & FITS.

AS 1100.201

TITLE

Gerry's Beam Engine - Metric Version

CODE IDENT NO

BE13

DRAWING NO

DETAIL - PISTON AND PISTON RING

**SHEET
SIZE**

A4

SCALE

2 : 1

NOTE SCALE FACTOR

A

B

C

D

E

F

1

2

3

4

1

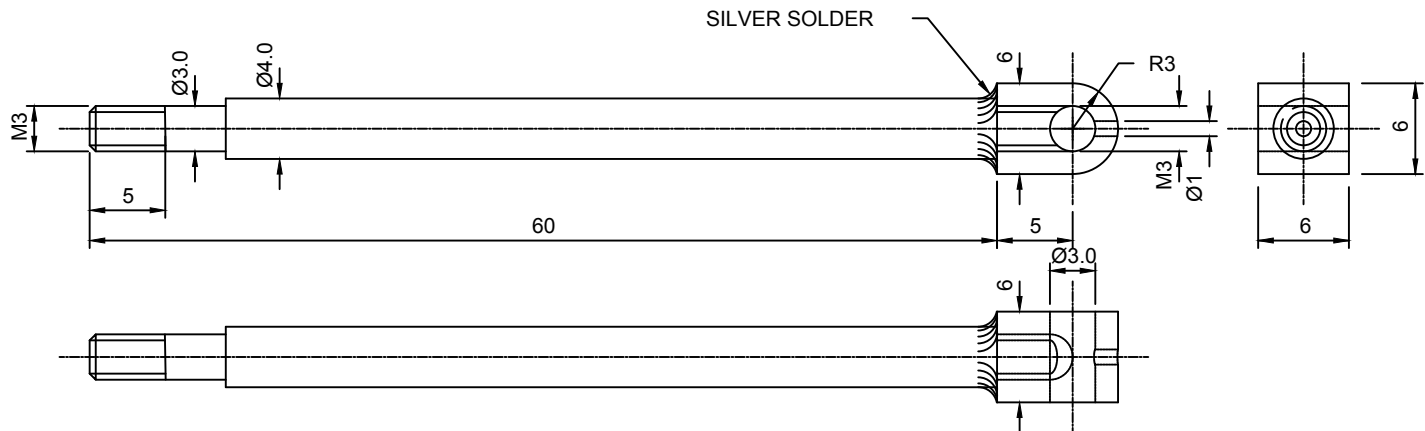
2

3

4

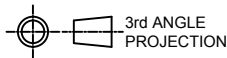
PRODUCED BY AN AUTODESK STUDENT VERSION

PRODUCED BY AN AUTODESK STUDENT VERSION



NOTES :
ALL DIMENSIONS IN
MILLIMETERS.

TOLERANCES :
ALL DIMENSIONS ARE
UNTOLERANCED. MAKE
ALLOWANCES FOR
LIMITS & FITS.



MATERIAL :
Ø4 SILVER STEEL OR
STAINLESS
GROUNDBAR
6mm Sq. KEY STEEL

FINISH

TITLE

Gerry's Beam Engine - Metric Version

CODE IDENT NO

BE14

DRAWING NO

DETAIL - CYLINDER ROD

SCALE

2 : 1

NOTE SCALE FACTOR

**SHEET
SIZE**

A4

AS 1100.201

A

B

C

D

E

F

A

B

C

D

E

F

1

2

3

4

1

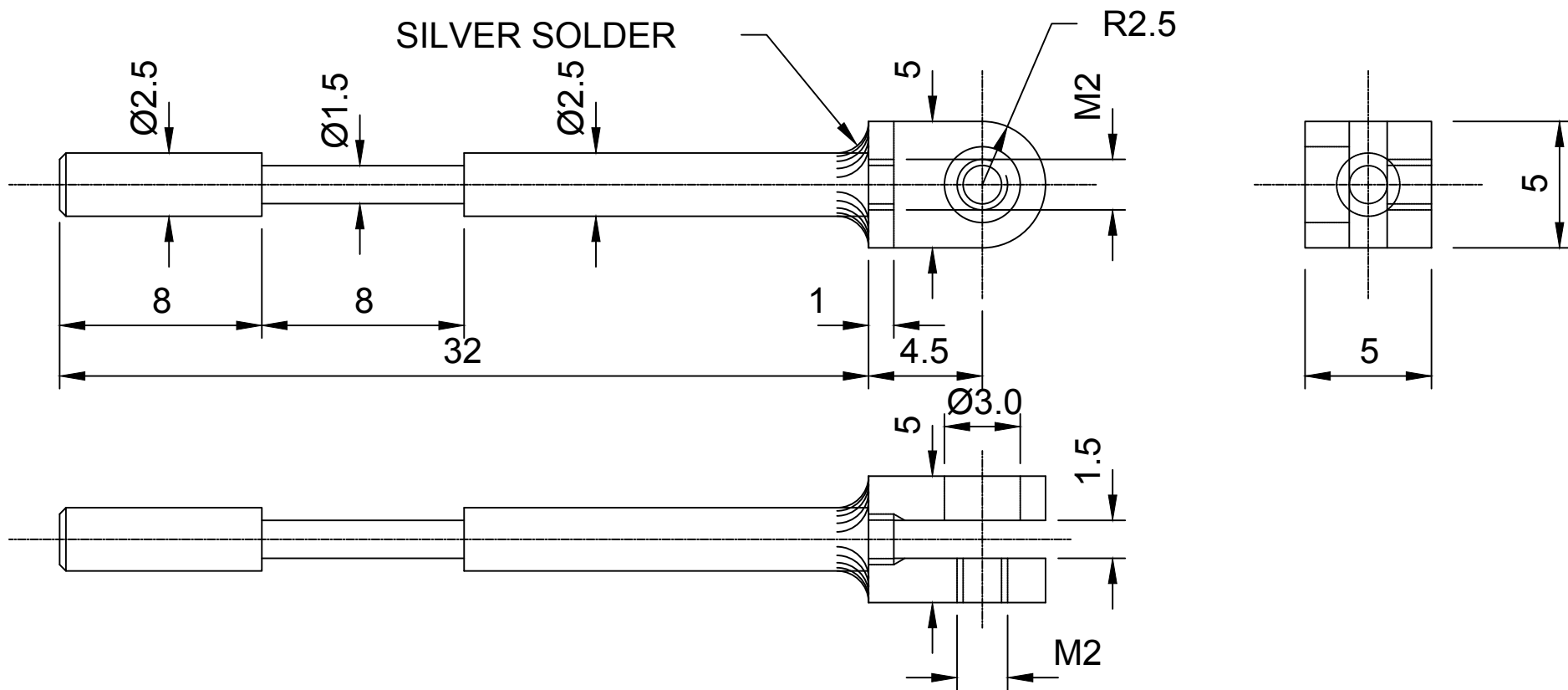
2

3

4

PRODUCED BY AN AUTODESK STUDENT VERSION

PRODUCED BY AN AUTODESK STUDENT VERSION



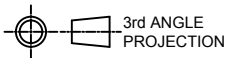
NOTES :

ALL DIMENSIONS IN
MILLIMETERS.

TOLERANCES :

ALL DIMENSIONS ARE
UNTOLERANCED. MAKE
ALLOWANCES FOR
LIMITS & FITS.

AS 1100.201



MATERIAL :
Ø2.5 SILVER STEEL OR
STAINLESS
GROUNDBAR
5mm Sq. KEY STEEL

FINISH

TITLE

Gerry's Beam Engine - Metric Version

CODE IDENT NO

BE15

SCALE 4 : 1

DRAWING NO

DETAIL - VALVE STEM

NOTE SCALE FACTOR

SHEET
SIZE

A4

A

B

C

D

E

F

A

B

C

D

E

F

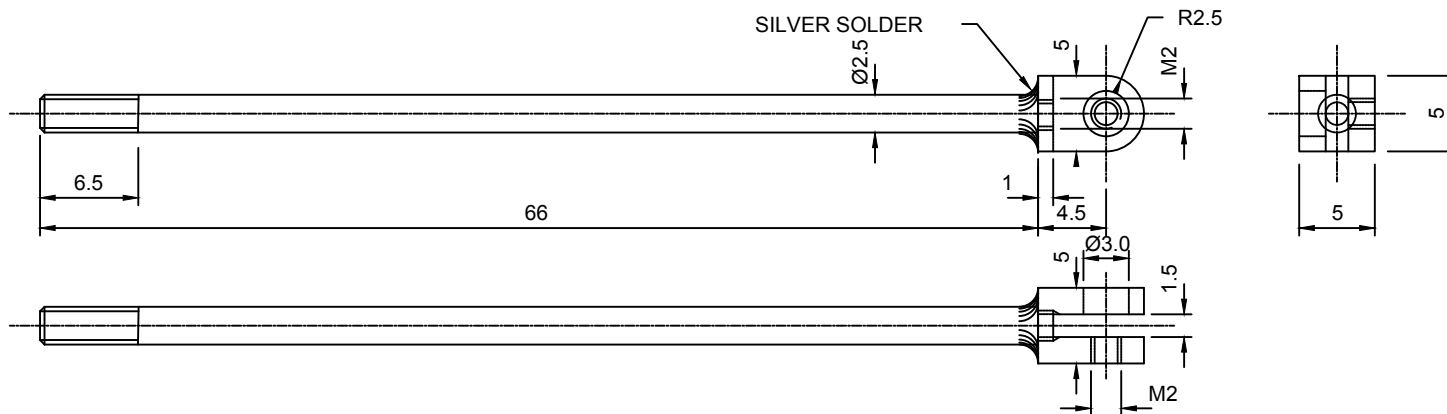
1

2

3

4

PRODUCED BY AN AUTODESK STUDENT VERSION



1

2

3

4

PRODUCED BY AN AUTODESK STUDENT VERSION

NOTES :
ALL DIMENSIONS IN
MILLIMETERS.

TOLERANCES :
ALL DIMENSIONS ARE
UNTOLERANCED. MAKE
ALLOWANCES FOR
LIMITS & FITS.



3rd ANGLE
PROJECTION

MATERIAL :
Ø2.5 SILVER STEEL OR
STAINLESS
GROUNDBAR
5mm Sq. KEY STEEL

FINISH

TITLE

Gerry's Beam Engine - Metric Version

CODE IDENT NO

BE16

DRAWING NO

DETAIL - VALVE LINK ROD

SCALE 2 : 1

NOTE SCALE FACTOR

**SHEET
SIZE
A4**

AS 1100.201

A

B

C

D

E

F

A

B

C

D

E

F

1

2

3

4

1

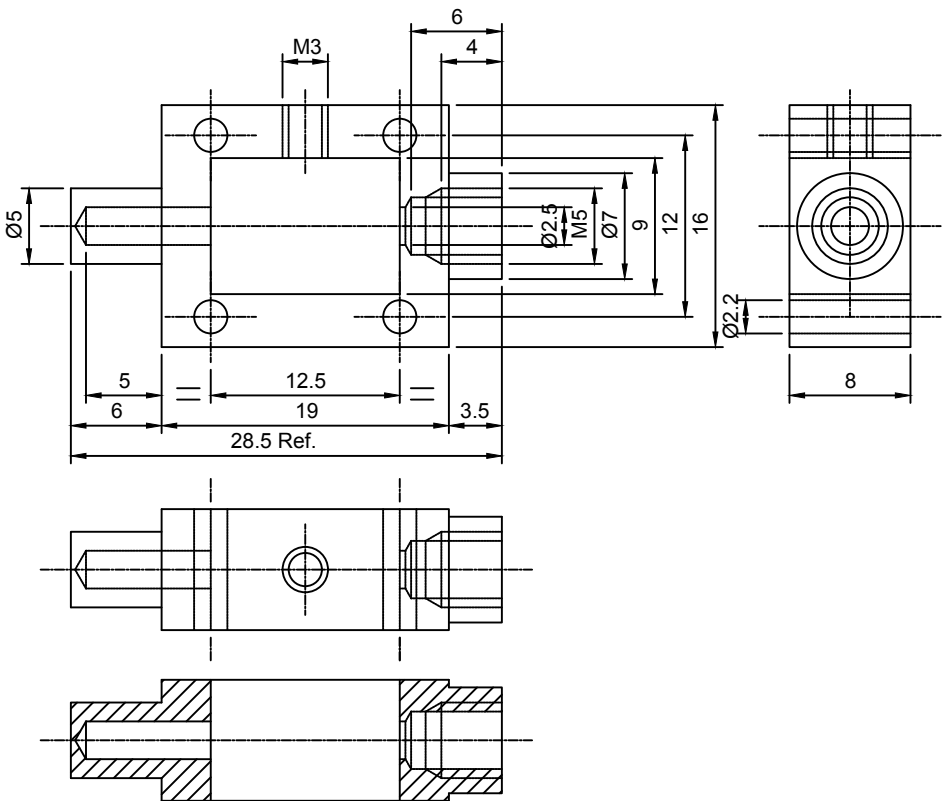
2

3

4

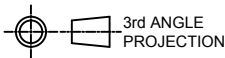
PRODUCED BY AN AUTODESK STUDENT VERSION

PRODUCED BY AN AUTODESK STUDENT VERSION



NOTES :
ALL DIMENSIONS IN
MILLIMETERS.

TOLERANCES :
ALL DIMENSIONS ARE
UNTOLERANCED. MAKE
ALLOWANCES FOR
LIMITS & FITS.



MATERIAL :
F/M BRASS

FINISH

TITLE

Gerry's Beam Engine - Metric Version

CODE IDENT NO

BE17

DRAWING NO

DETAIL - STEAM CHEST

SCALE 2 : 1

NOTE SCALE FACTOR

**SHEET
SIZE
A4**

AS 1100.201

A

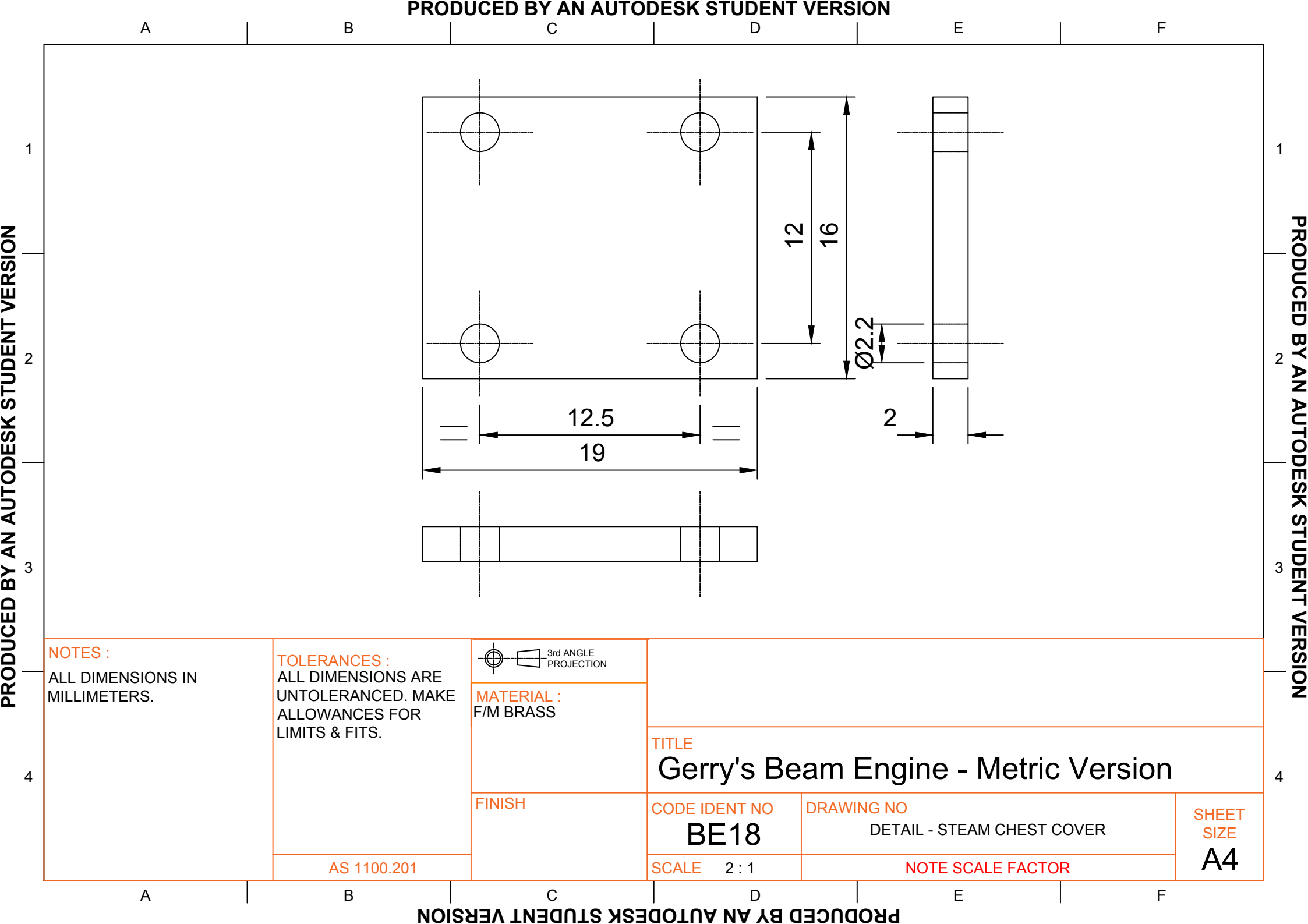
B

C

D

E

F



A

B

C

D

E

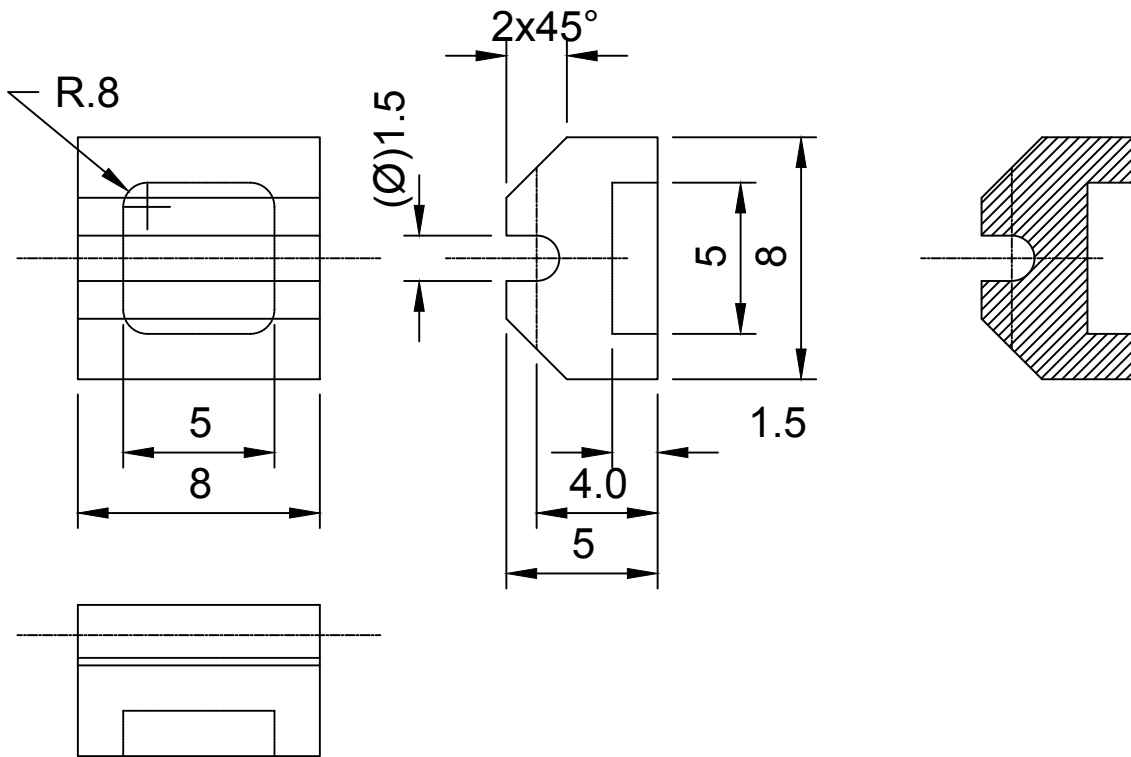
F

1

2

3

4



1

2

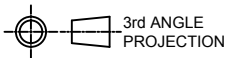
3

4

NOTES :
ALL DIMENSIONS IN
MILLIMETERS.

TOLERANCES :
ALL DIMENSIONS ARE
UNTOLERANCED. MAKE
ALLOWANCES FOR
LIMITS & FITS.

AS 1100.201



3rd ANGLE
PROJECTION

MATERIAL :
STAINLESS

FINISH

TITLE

Gerry's Beam Engine - Metric Version

CODE IDENT NO

BE19

SCALE

4 : 1

DRAWING NO

DETAIL - VALVE

NOTE SCALE FACTOR

SHEET
SIZE

A4

A

B

C

D

E

F

A

B

C

D

E

F

1

2

3

4

1

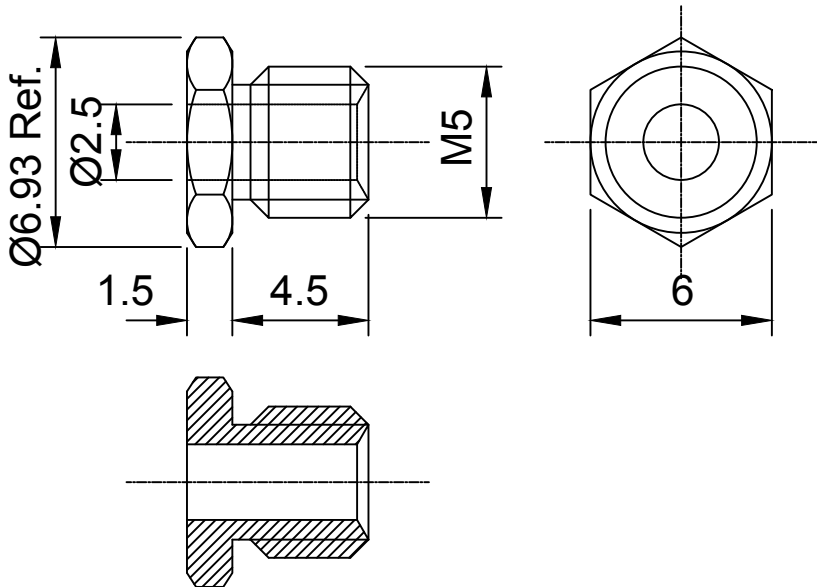
2

3

4

PRODUCED BY AN AUTODESK STUDENT VERSION

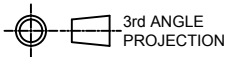
PRODUCED BY AN AUTODESK STUDENT VERSION



NOTES :
ALL DIMENSIONS IN
MILLIMETERS.

TOLERANCES :
ALL DIMENSIONS ARE
UNTOLERANCED. MAKE
ALLOWANCES FOR
LIMITS & FITS.

AS 1100.201



MATERIAL :
PHOS. BRONZE

FINISH

TITLE

Gerry's Beam Engine - Metric Version

CODE IDENT NO

BE20

SCALE

4 : 1

DRAWING NO

DETAIL - VALVE STEM GLAND

NOTE SCALE FACTOR

SHEET
SIZE

A4

A

B

C

D

E

F

A

B

C

D

E

F

1

2

3

4

1

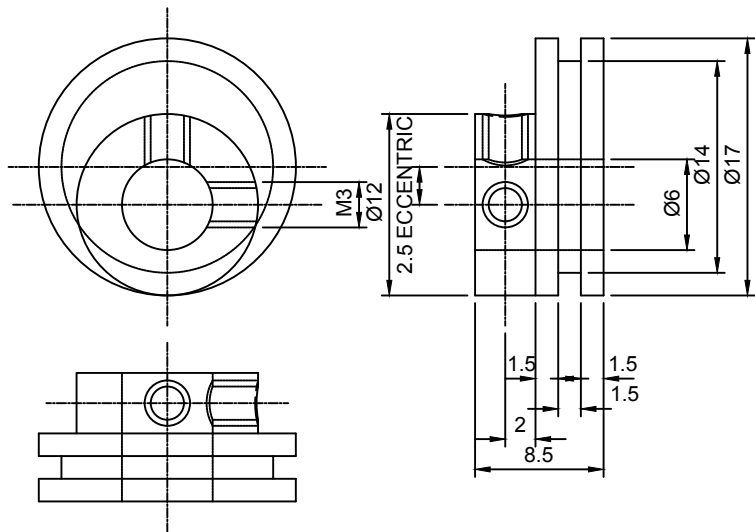
2

3

4

PRODUCED BY AN AUTODESK STUDENT VERSION

PRODUCED BY AN AUTODESK STUDENT VERSION



NOTES :
ALL DIMENSIONS IN
MILLIMETERS.

TOLERANCES :
ALL DIMENSIONS ARE
UNTOLERANCED. MAKE
ALLOWANCES FOR
LIMITS & FITS.



MATERIAL :
MILD STEEL

FINISH

TITLE

Gerry's Beam Engine - Metric Version

CODE IDENT NO

BE21

DRAWING NO

DETAIL - ECCENTRIC BOSS

SHEET
SIZE

A4

SCALE 2 : 1

NOTE SCALE FACTOR

AS 1100.201

A

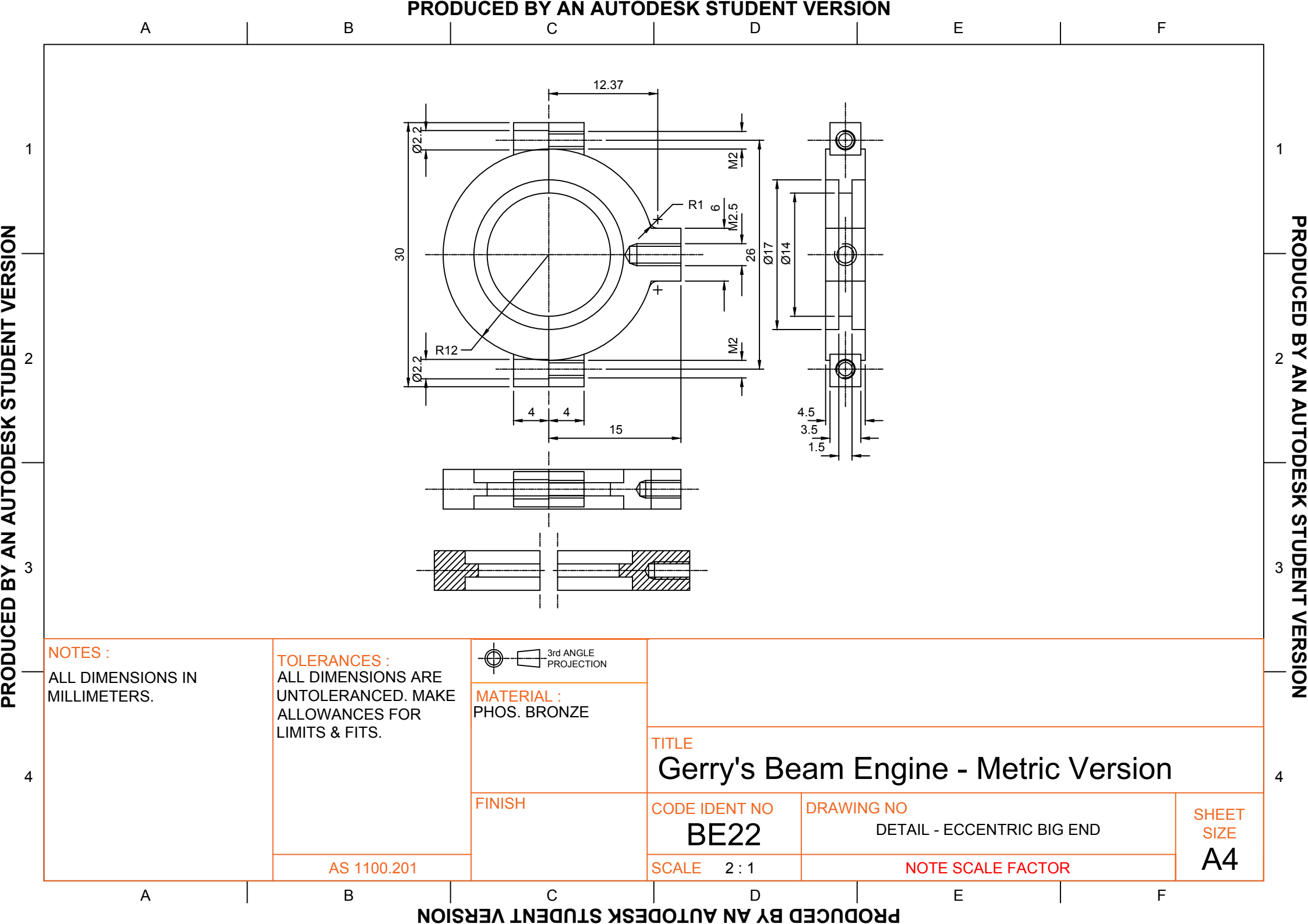
B

C

D

E

F



A

B

C

D

E

F

1

2

3

4

1

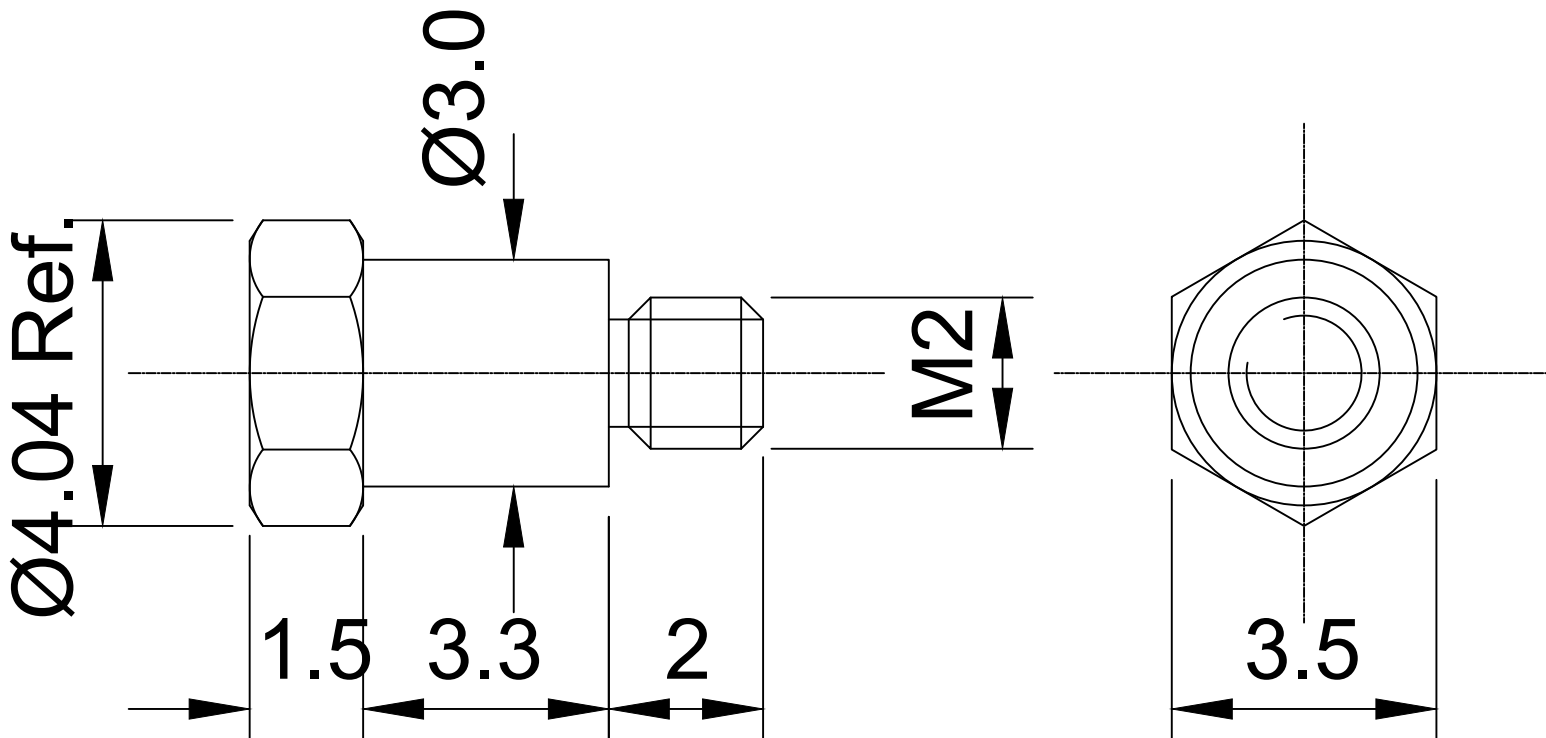
2

3

4

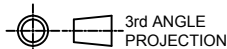
PRODUCED BY AN AUTODESK STUDENT VERSION

PRODUCED BY AN AUTODESK STUDENT VERSION



NOTES :
ALL DIMENSIONS IN
MILLIMETERS.

TOLERANCES :
ALL DIMENSIONS ARE
UNTOLERANCED. MAKE
ALLOWANCES FOR
LIMITS & FITS.



3rd ANGLE
PROJECTION

MATERIAL :
EN30B

FINISH

TITLE

Gerry's Beam Engine - Metric Version

CODE IDENT NO

BE23

DRAWING NO

DETAIL - CLEVIS PIN

SCALE 10 : 1

NOTE SCALE FACTOR - 2 PARTS REQUIRED

SHEET
SIZE

A4

AS 1100.201

A

B

C

D

E

F

PRODUCED BY AN AUTODESK STUDENT VERSION



NOTE SCALE FACTOR - 2 PARTS REQUIRED