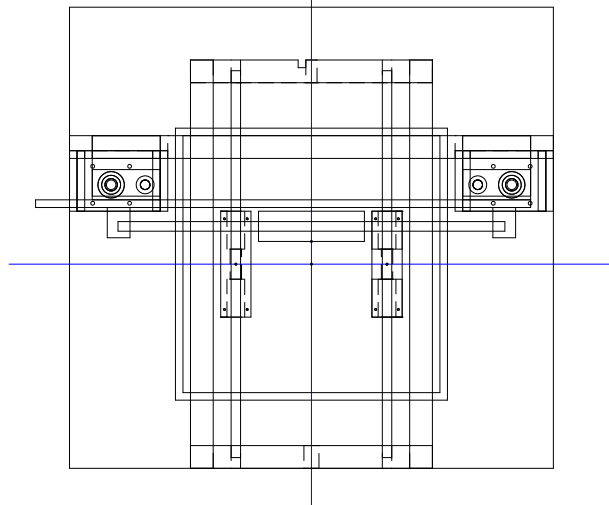
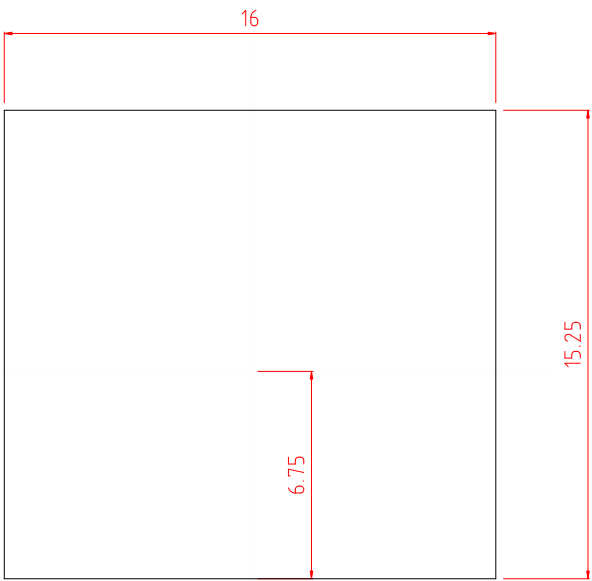
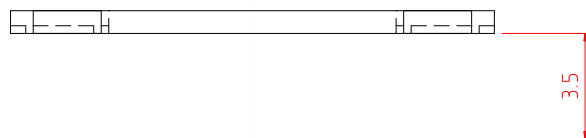
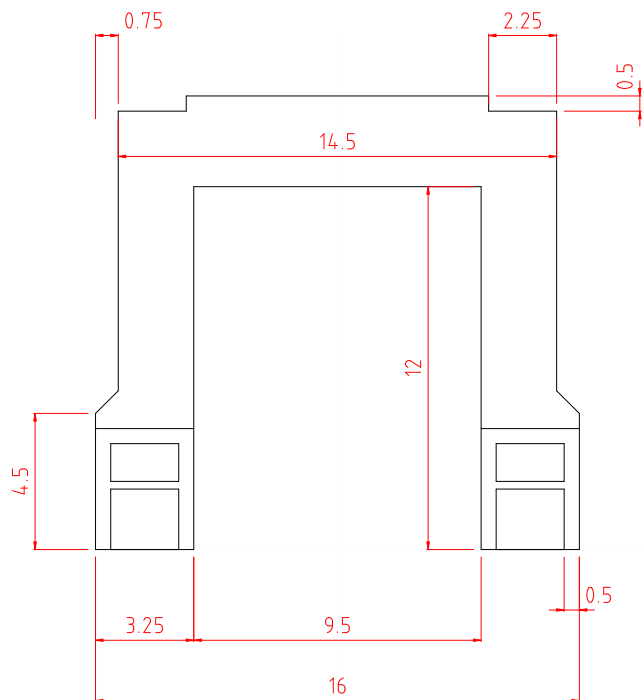


Allwood 3d Printer
Andrew H. Wakefield

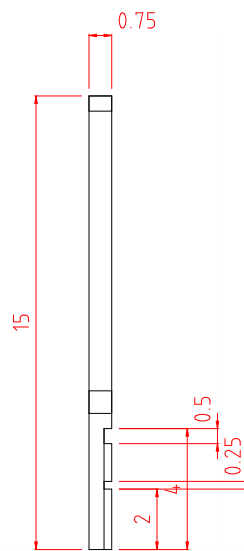


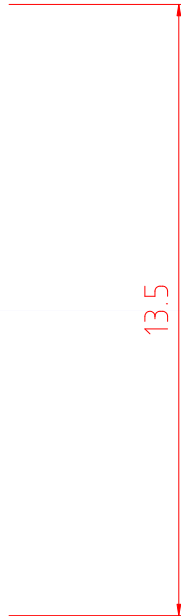


Base

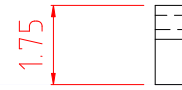
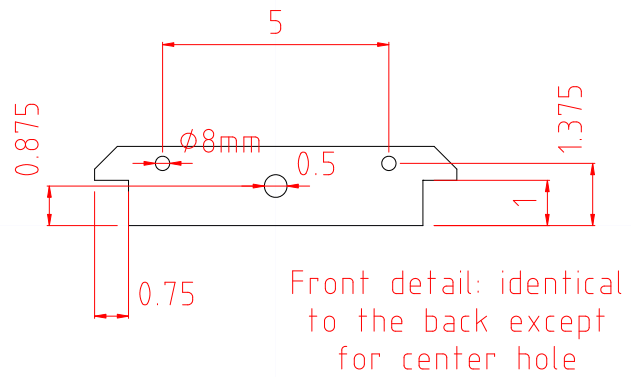


Upright

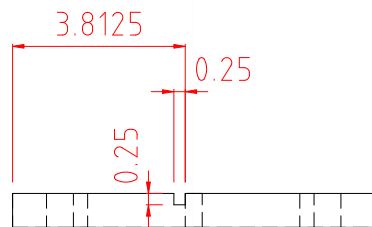




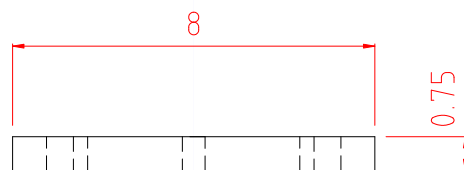
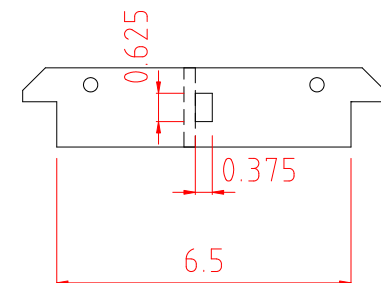
Y sides



Y front / back



Back detail: identical to the front except for center slot and dado for stepper mount



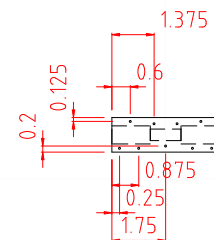
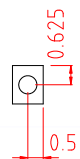
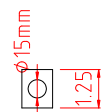


ø8mm

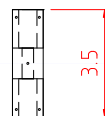
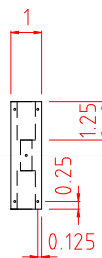


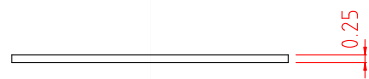
Y rails



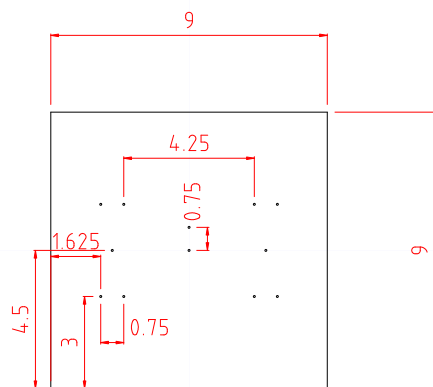


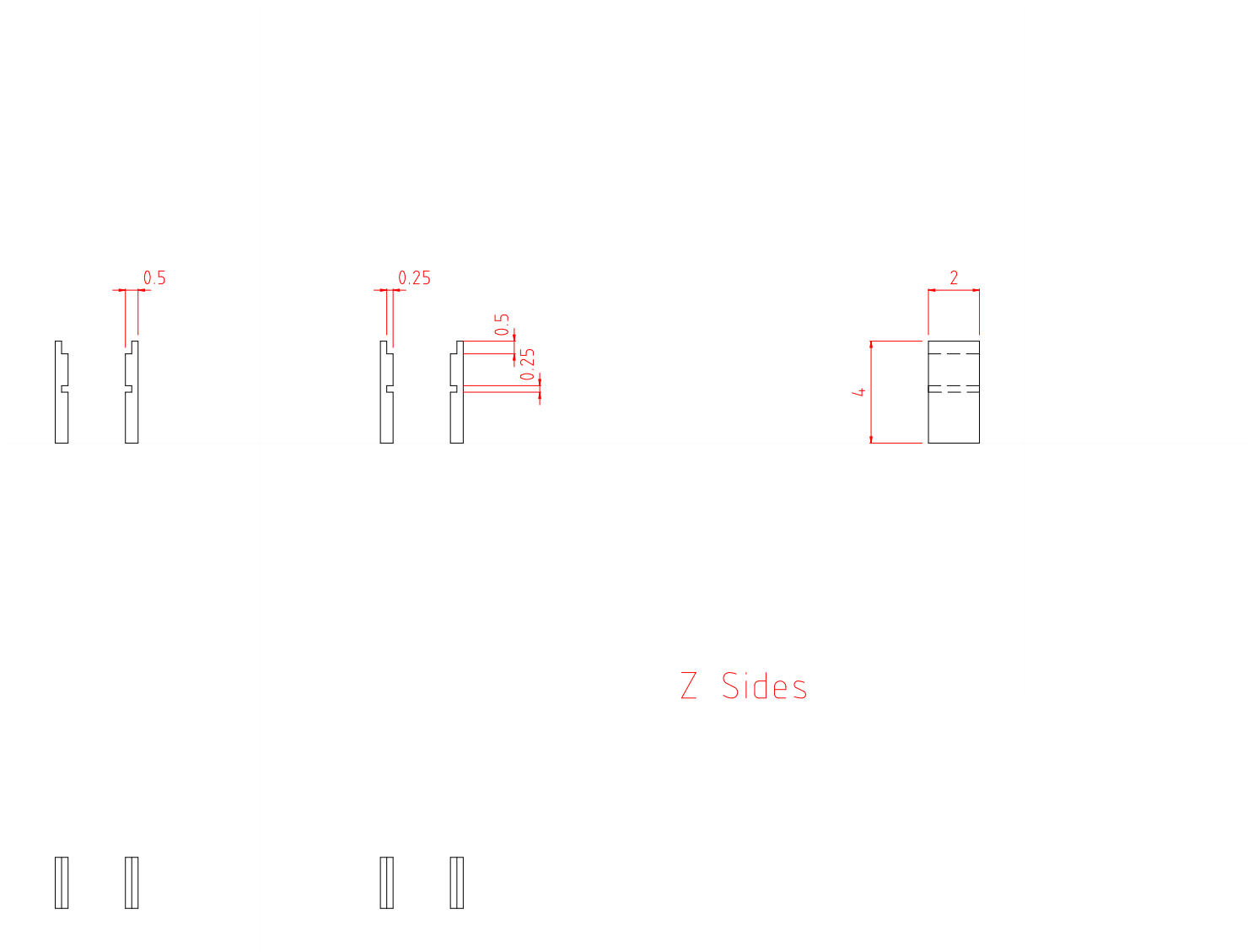
Y guides





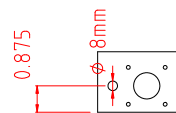
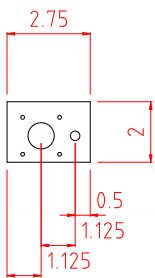
Y Base





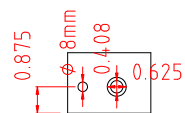
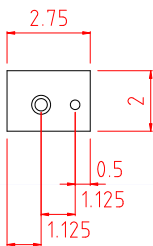


Z stepper mounts





Z lower
rod supports

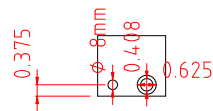
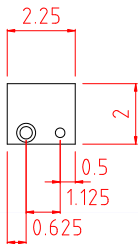


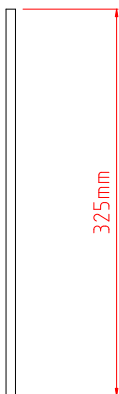


0.5



Z upper
rod supports





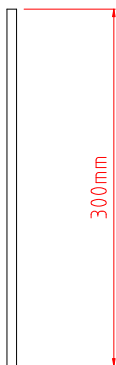
325mm



Z rail

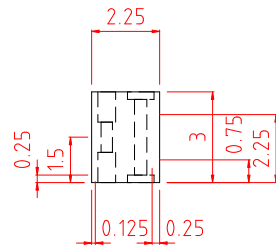


8mm

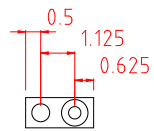
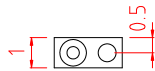


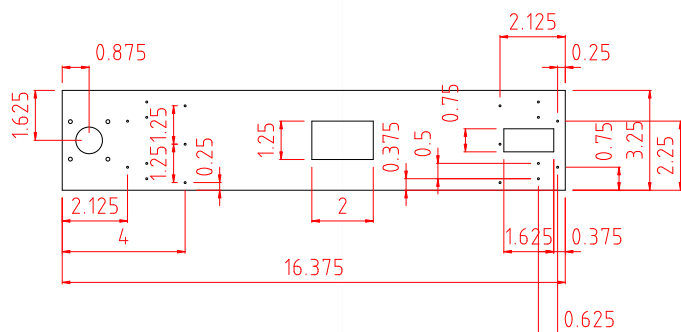
Z lead screw



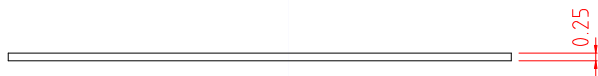


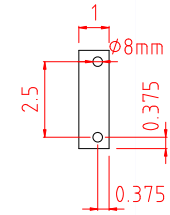
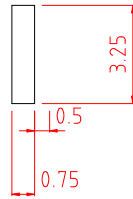
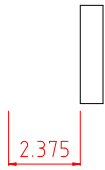
Z Carriage





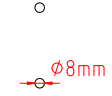
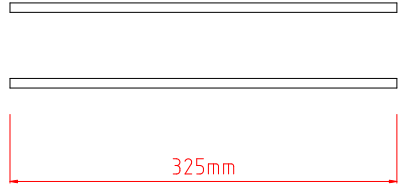
X Back



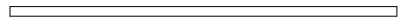


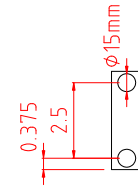
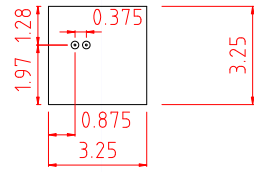
X Rail Supports





X rails





X-axis Carriage



Stepper Mount Layout

Can use 7/8" hole for center
Can use 1/8" holes for screws

