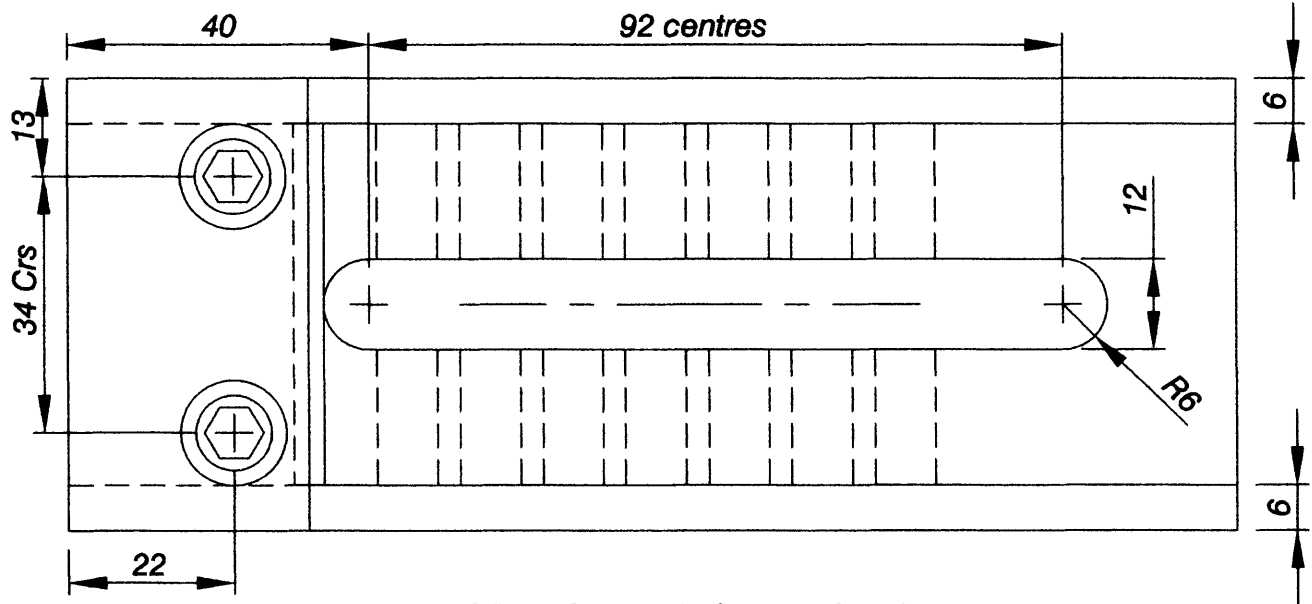
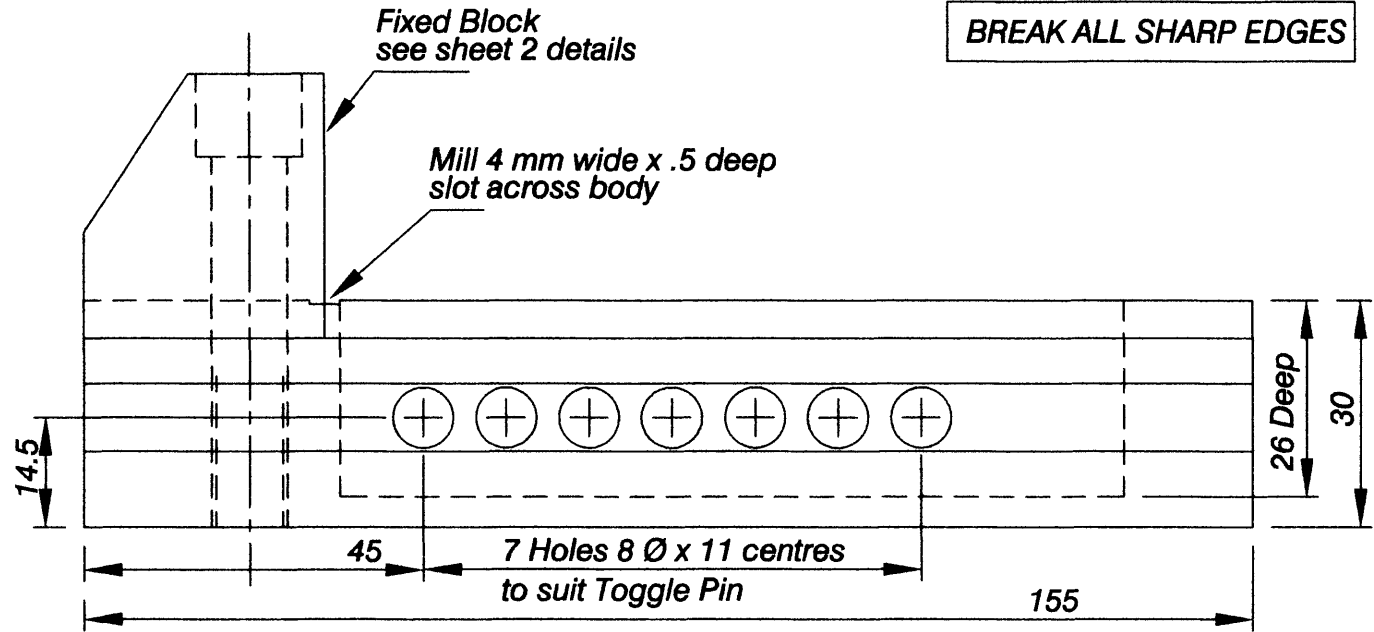
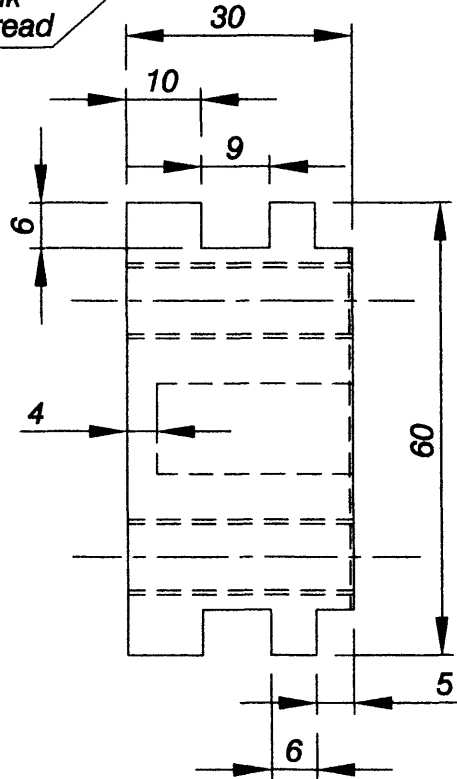
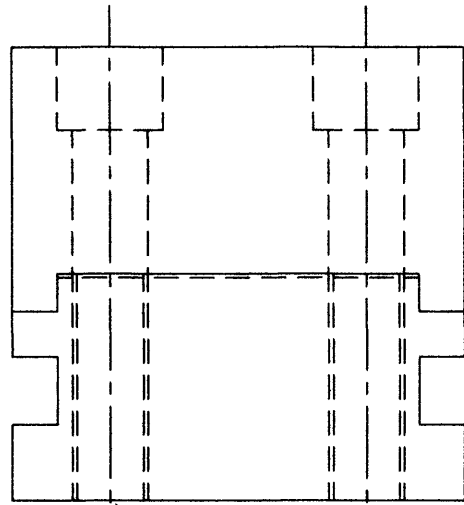


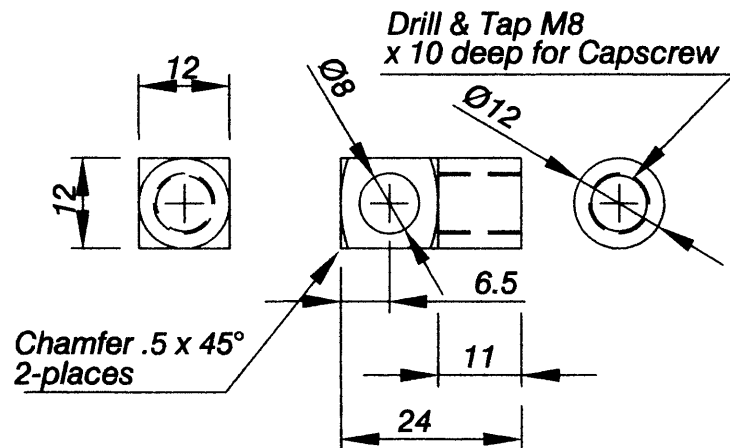
BREAK ALL SHARP EDGES

Drill & Tap M10
2-places
Light countersink
after tapping thread

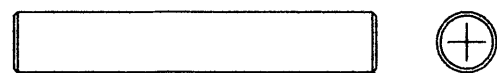
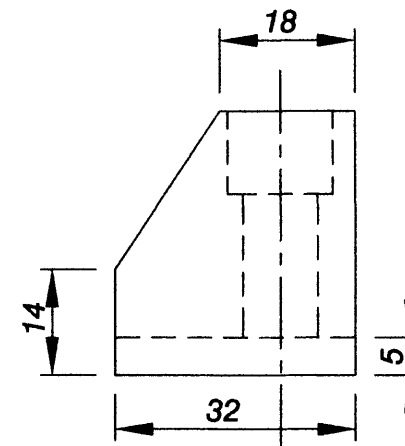
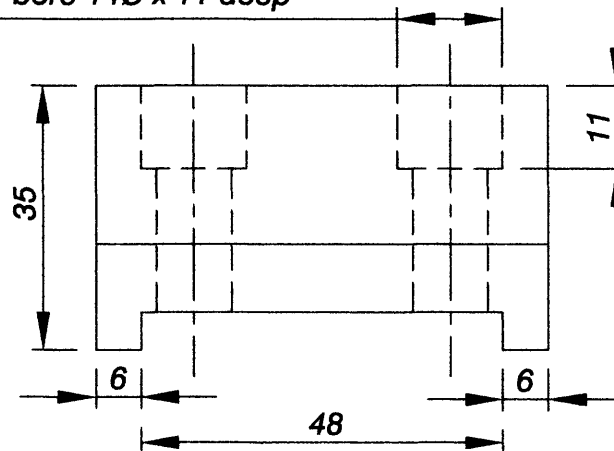


MAIN BODY 1-Off Bright Steel or Cast iron

TOGGLE 1 - Off
Mild steel



Counter bore 14Ø x 11 deep



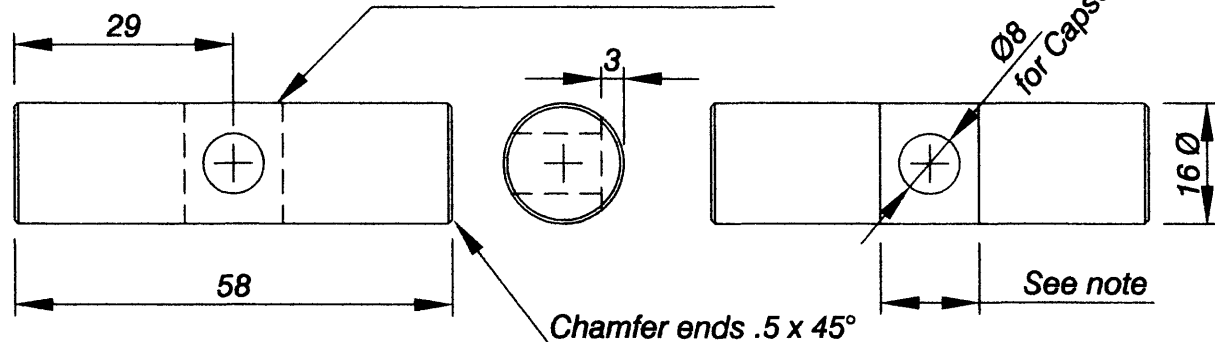
TOGGLE PIN 1 - Off
8Ø x 48 long
Silver Steel

Chamfer both ends
.5 x 45°

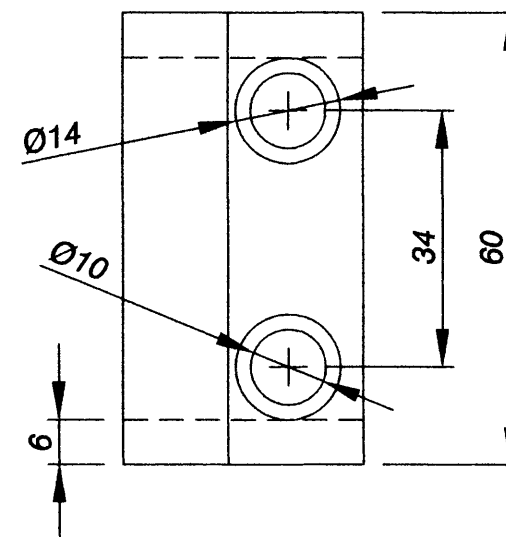
CAPSCREW Socket Head M8 x 40
1 - Off required for Sliding Block
to Toggle

CAPSCREW Socket Head M10 x 45
2 - Off required for Fixed Block

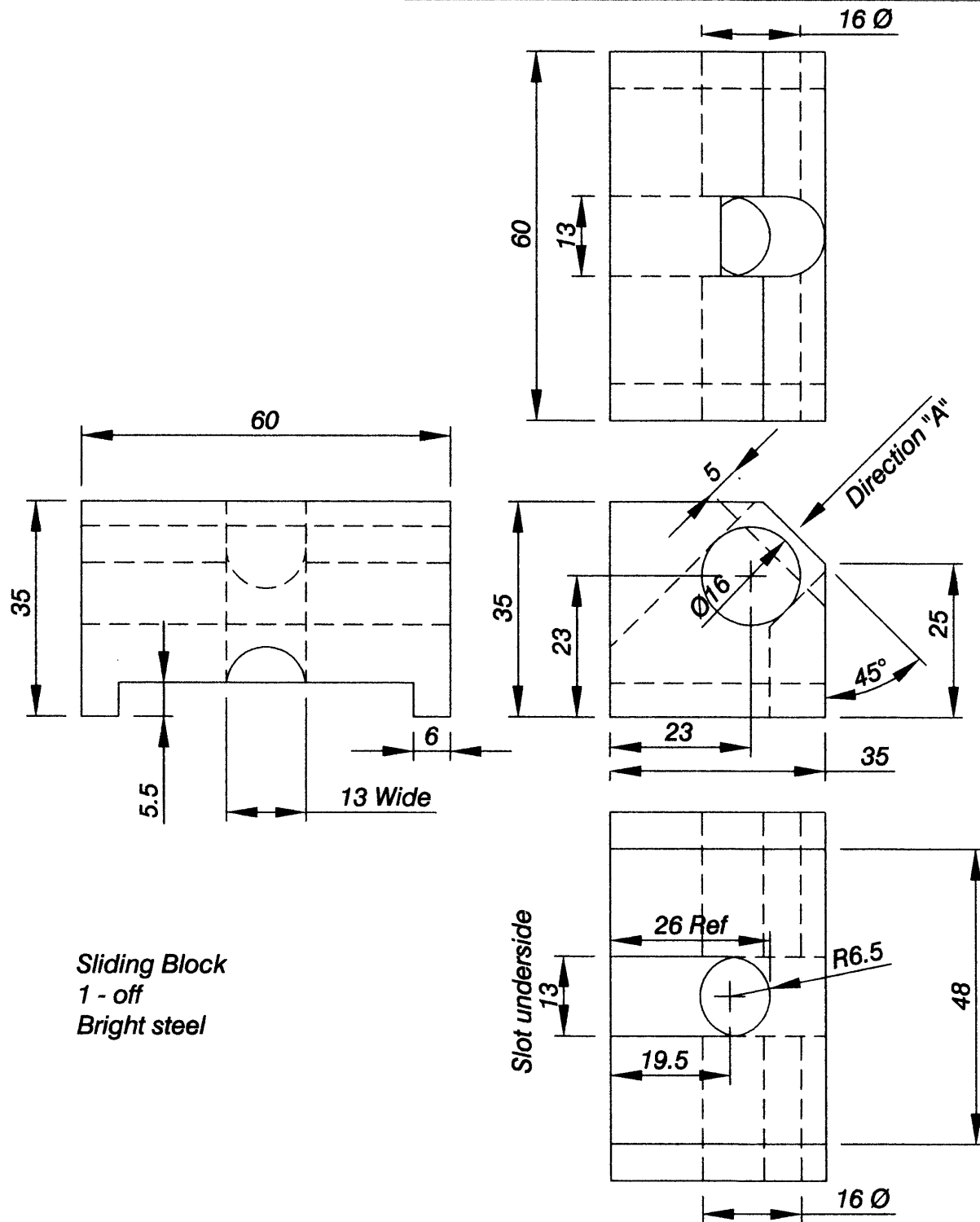
Mill slot one side 12 wide x 3 deep
suit diam of Capscrew head



PIVOT BAR 1 - off 16 Ø Bright



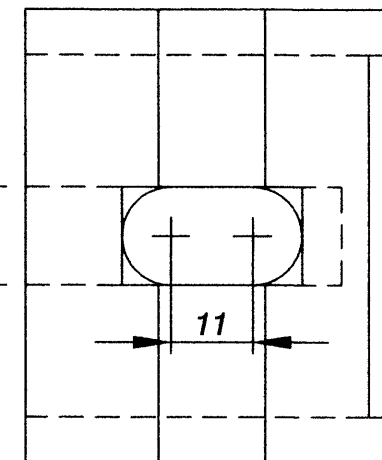
FIXED BLOCK
1 - Off
Bright Steel



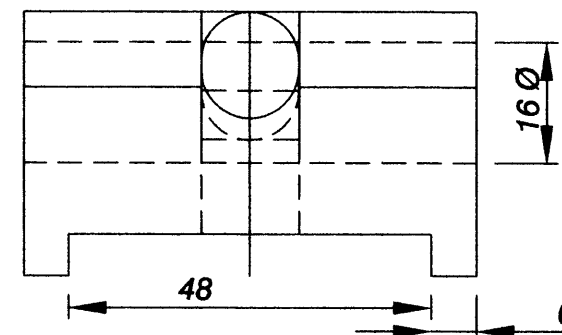
Sliding Block
1 - off
Bright steel

View on
direction "A"

Mill slot 13 wide
down from 45°
face right through



Mill 13 wide



Bore to suit
Pivot Bar