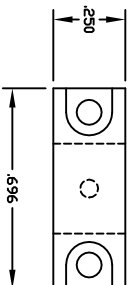
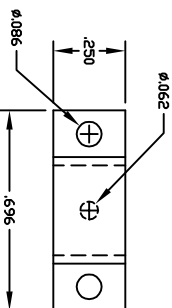
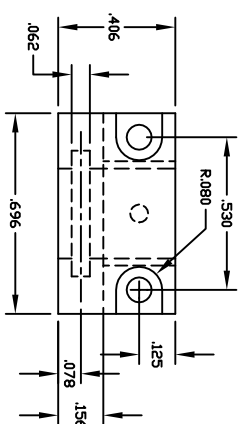
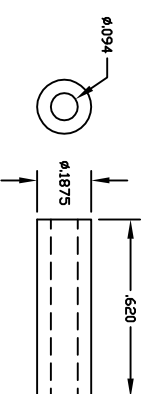
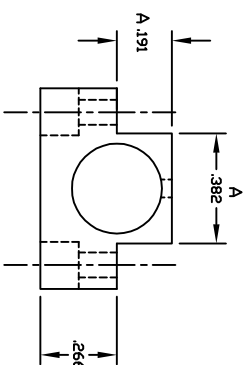
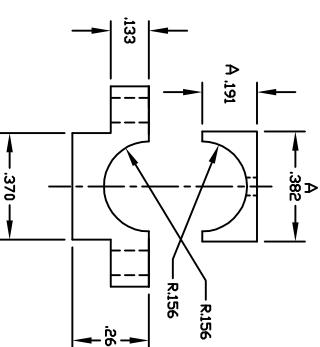
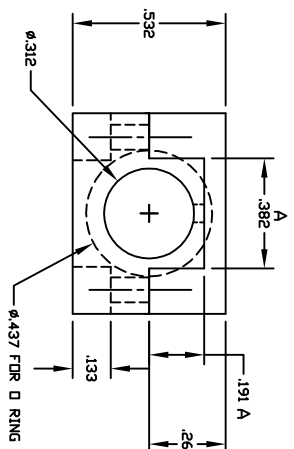
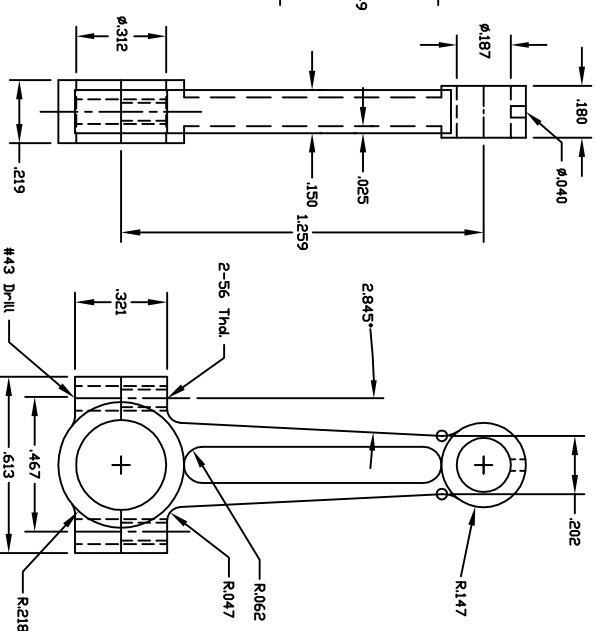
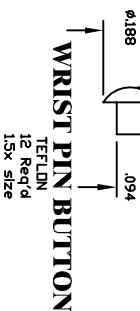
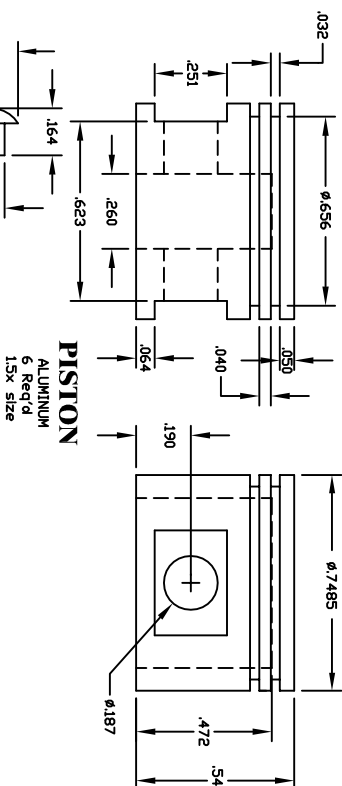
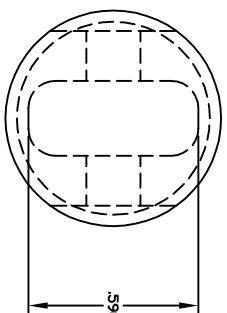


There have been many articles published over the years on making piston rings. I have tried several and have had good luck with the Trimble method. It's too long to explain this method but it can be found on at: <http://modelenginewerks.org/cirrus/pistons.html>



DRAWN BY: GEORGE D. BRITNELL			
SCALE: FULL or NOTED		SHT. 1	
DATE: NOV. 4, 2013		CAPS AND RODS	
CHANGE	B	PISTON DIMS	11/21/13
CHANGE	A	BRNG SIZE	11/12/13

300 I SIX CYLINDER