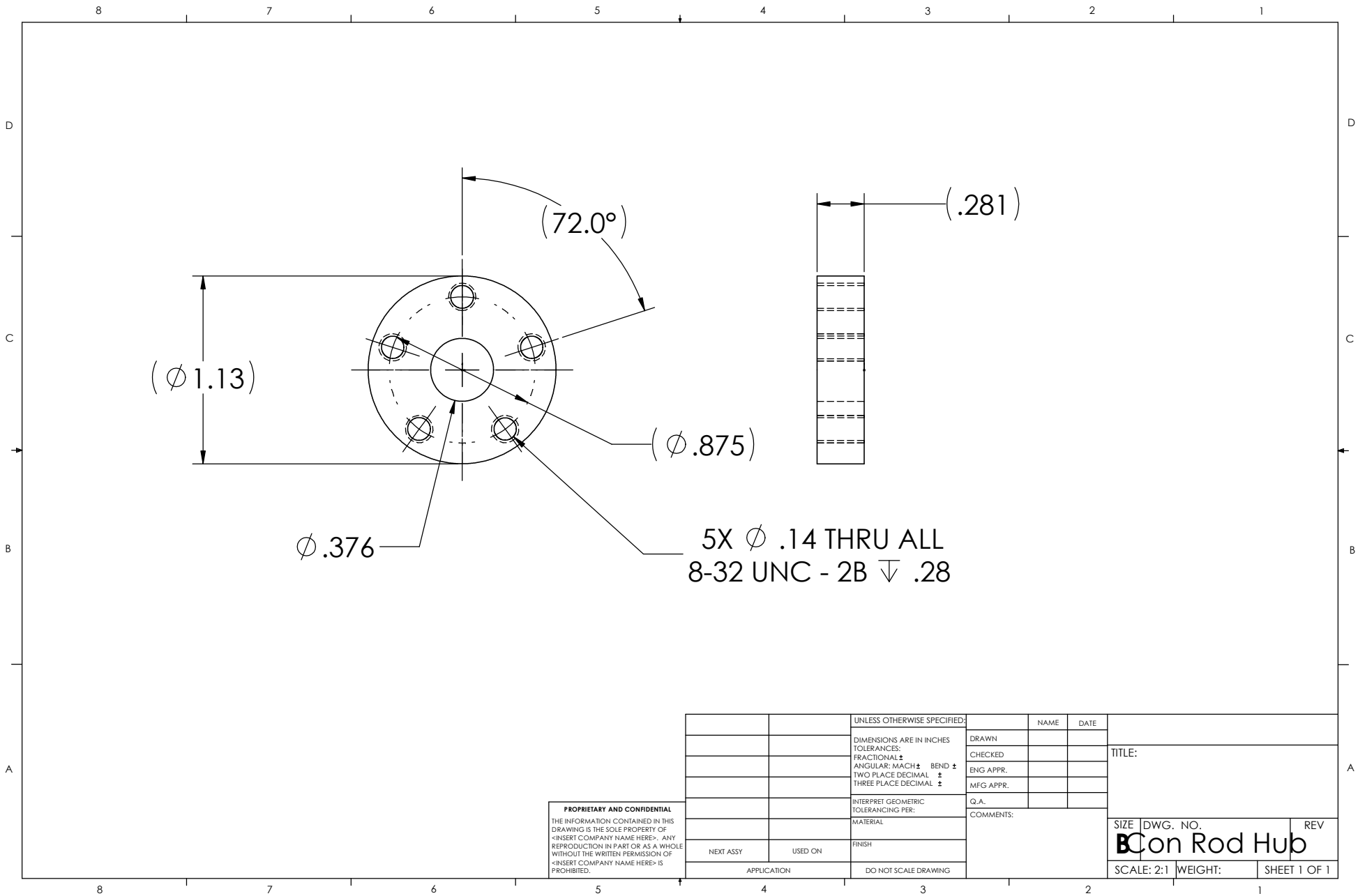


ITEM NO.	PART NUMBER	DESCRIPTION	QTY.
1	Con Rod Hub		1
2	Shoulder Bolt - 3_16 x 5_16 LG		5

PROPRIETARY AND CONFIDENTIAL  
THE INFORMATION CONTAINED IN THIS  
DRAWING IS THE SOLE PROPERTY OF  
<INSERT COMPANY NAME HERE>. ANY  
REPRODUCTION IN PART OR AS A WHOLE  
WITHOUT THE WRITTEN PERMISSION OF  
<INSERT COMPANY NAME HERE> IS  
PROHIBITED.

		UNLESS OTHERWISE SPECIFIED:		NAME	DATE	TITLE:		
		DIMENSIONS ARE IN INCHES		DRAWN				
		TOLERANCES:		CHECKED				
		FRACTIONAL: ±		ENG APPR.				
		ANGULAR: MACH ± BEND ±		MFG APPR.				
		TWO PLACE DECIMAL ±		Q.A.		COMMENTS:		
		THREE PLACE DECIMAL ±						
		INTERPRET GEOMETRIC TOLERANCING PER:						
		MATERIAL				SIZE DWG. NO. REV		
NEXT ASSY	USED ON	FINISH						
APPLICATION		DO NOT SCALE DRAWING						
						SCALE: 2:1	WEIGHT:	SHEET 1 OF 1

Con Rod Hub Assembly



PROPRIETARY AND CONFIDENTIAL  
THE INFORMATION CONTAINED IN THIS  
DRAWING IS THE SOLE PROPERTY OF  
<INSERT COMPANY NAME HERE>. ANY  
REPRODUCTION IN PART OR AS A WHOLE  
WITHOUT THE WRITTEN PERMISSION OF  
<INSERT COMPANY NAME HERE> IS  
PROHIBITED.

		UNLESS OTHERWISE SPECIFIED:		NAME	DATE	TITLE:
		DIMENSIONS ARE IN INCHES	DRAWN			
		TOLERANCES:	CHECKED			
		FRACTIONAL $\pm$	ENG APPR.			
		ANGULAR: MACH $\pm$ BEND $\pm$	MFG APPR.			COMMENTS:
		TWO PLACE DECIMAL $\pm$	Q.A.			
		THREE PLACE DECIMAL $\pm$				
		INTERPRET GEOMETRIC TOLERANCING PER:				
		MATERIAL				SIZE DWG. NO. REV
NEXT ASSY	USED ON	FINISH				<b>BCon Rod Hub</b>
APPLICATION		DO NOT SCALE DRAWING				SCALE: 2:1 WEIGHT: SHEET 1 OF 1