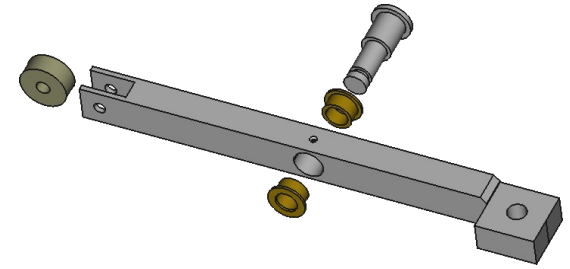


Rocker Arm

mild steel

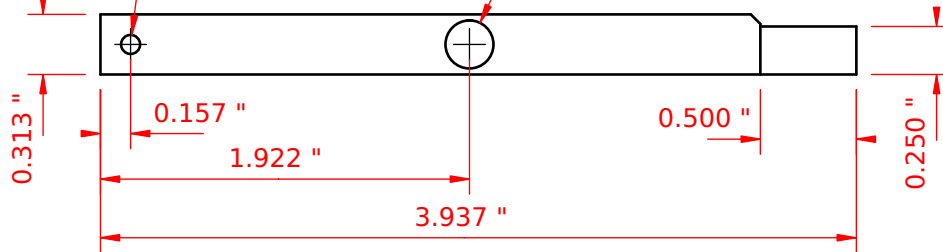


Bushings should be a light press fit, secured with LocTite (tm).

Bearing follower is a 623 bearing (3 x 10 x 4 mm) secured with an M3x0.5 screw.

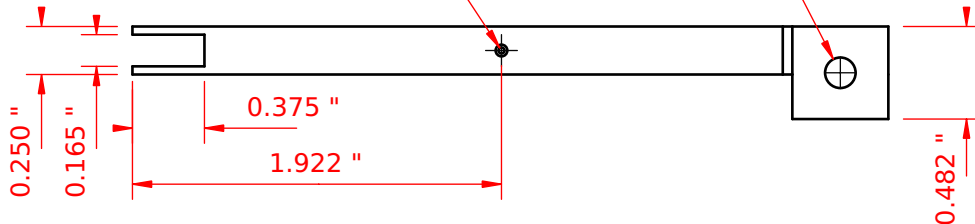
Drill #39
99.000 thou
(2.5mm). Tap M3x.5
continuously through

0.250 "



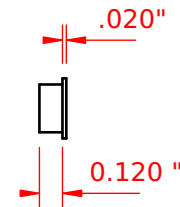
Drill just to the
bore using #1
center drill
31.000 thou

Drill #21
0.159 "
Tap 10-32



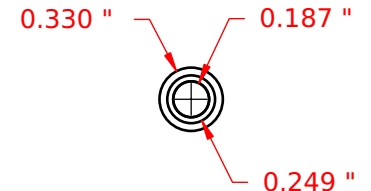
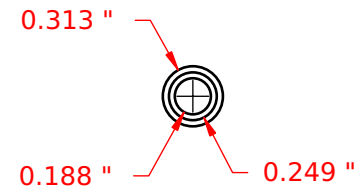
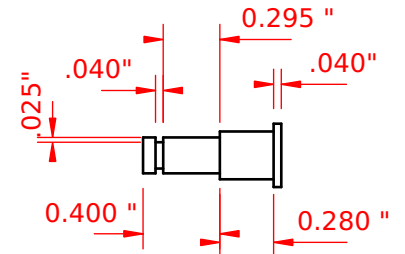
Bushings

brass / bronze
(2 pieces)



Pin

mild steel



Designed by Andrew H. Wakefield	Scale 1:1	Default Dim. +/- .001"	Title Steel Webster	Sheet 11	Revision 3.5	Date 2/20/2020
------------------------------------	--------------	---------------------------	------------------------	-------------	-----------------	-------------------