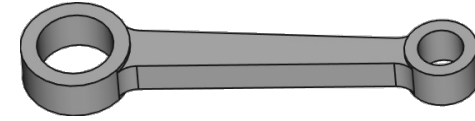
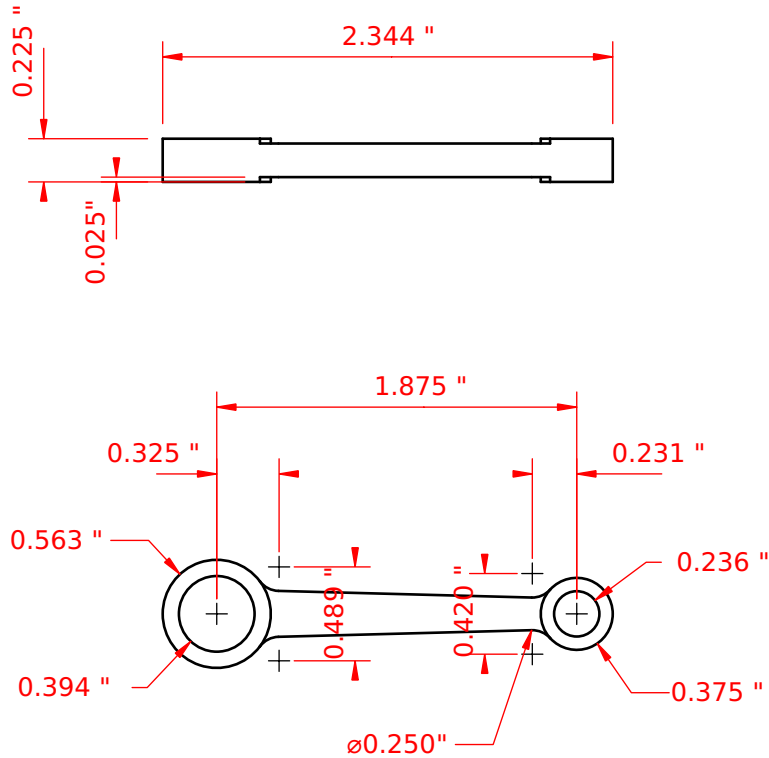


# Rod

mild steel

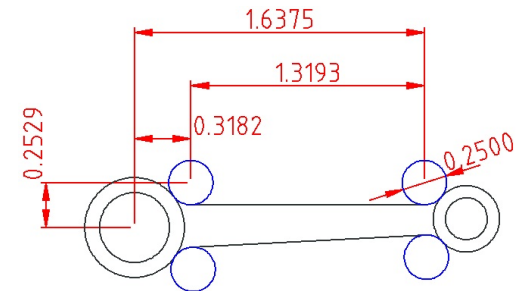


Use MF106 and MF63 bearings in the big end and small end, respectively.



## Construction Note:

With the rod angled a 1.5°, use a .25" endmill, positioned as shown, to cut the angled flank.



Copyright 2020 by Andrew H. Wakefield  
Released under Creative Commons 4.0 BY-SA



Designed by Andrew H. Wakefield	Scale 1:1	Default Dim. +/- .001"	Title <b>Modular Tower Engine</b>	Sheet 7	Revision 1.3	Date 7/24/2020
------------------------------------	--------------	---------------------------	--------------------------------------	------------	-----------------	-------------------