

D

C

B

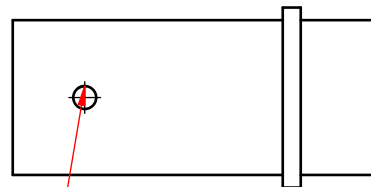
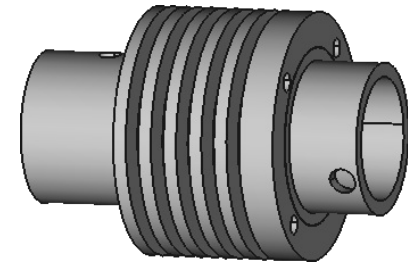
A

Cylinder

cast iron / mild steel

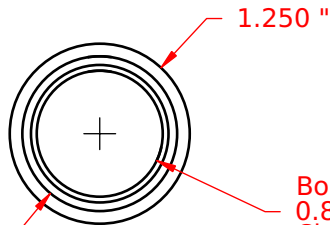
Cylinder

As shown, made in two pieces that are joined by a shrink fit. Can also be made from a single piece of cast iron / mild steel.



Drill # 25
0.159 "
Tap 10-32

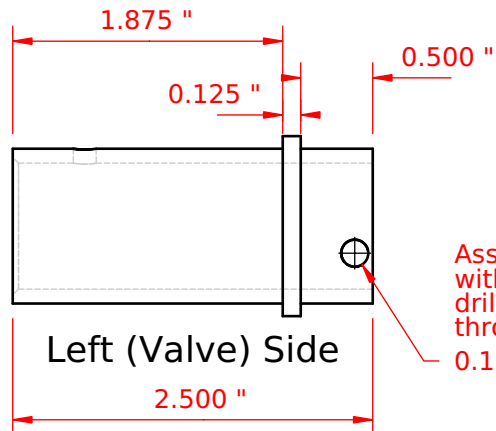
Top View



1.075 "

1.250 "

Bore and lap
0.875 "
Chamfer 0.040 "
on open end

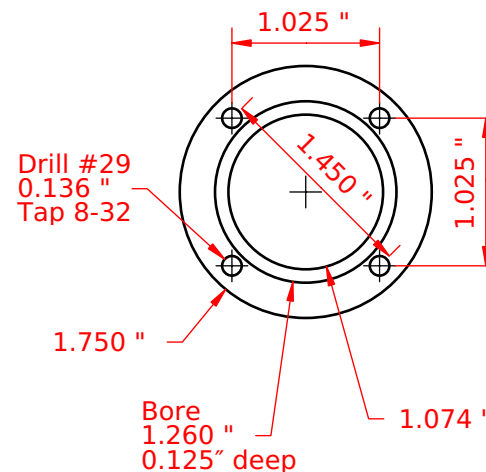


Left (Valve) Side

Assemble cylinder
with head before
drilling 3/16" hole
through both at once.
0.188 "

Cooling Fins

aluminum

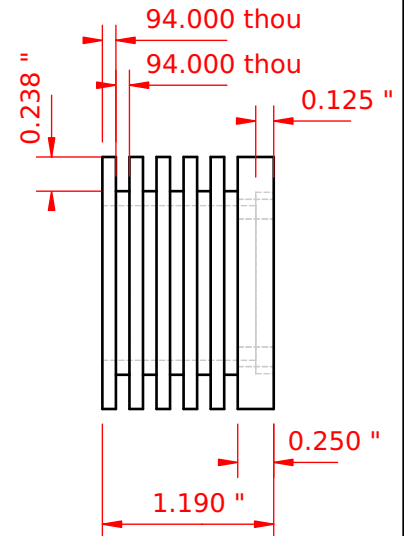


Drill #29
0.136 "
Tap 8-32

1.750 "

Bore
1.260 "
0.125" deep

1.074 "



Designed by

Andrew H. Wakefield

Scale

3:4

Default Dim.

+/- .001"

Title

Steel Webster

Sheet

7

Revision

1.5

Date

2/15/2020

D

C

B

A