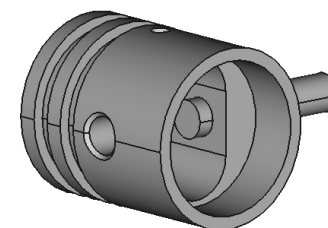


# Piston & Wrist Pin

Assembly notes:

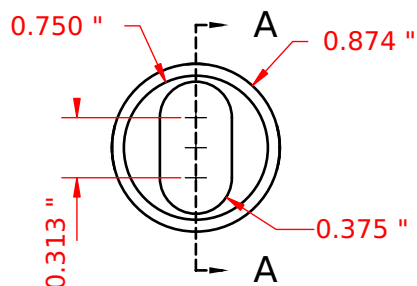
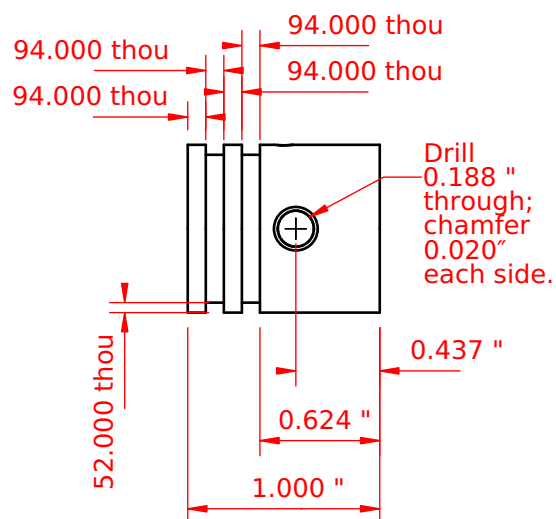
Wrist pin should be a slight-to-medium press fit in piston. On final assembly, ends of pin can be lightly staked to prevent movement.



Partially assembled

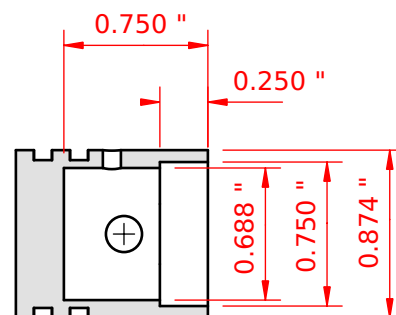
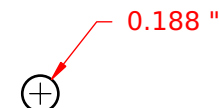
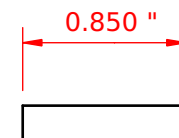
## Piston

Cast iron



## Wrist Pin

mild steel



Section A - A

Designed by Andrew H. Wakefield	Scale 1:1	Default Dim. +/- .001"	Title Steel Webster	Sheet 6	Revision 1.5	Date 2/15/2020
------------------------------------	--------------	---------------------------	------------------------	------------	-----------------	-------------------