

D

C

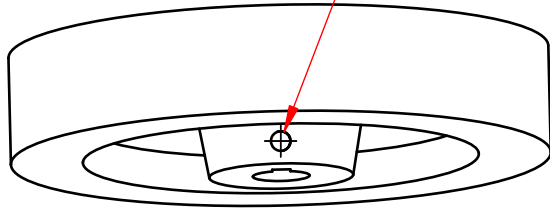
B

A

3

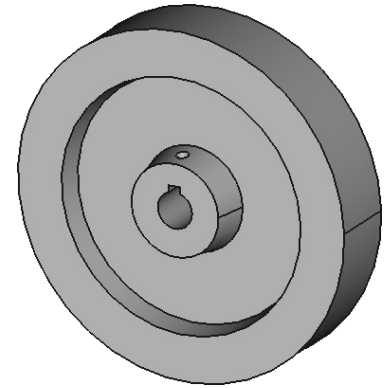
3

Drill #29  
0.136 "  
at draft angle  
through to bore  
(both sides).  
Tap 8-32



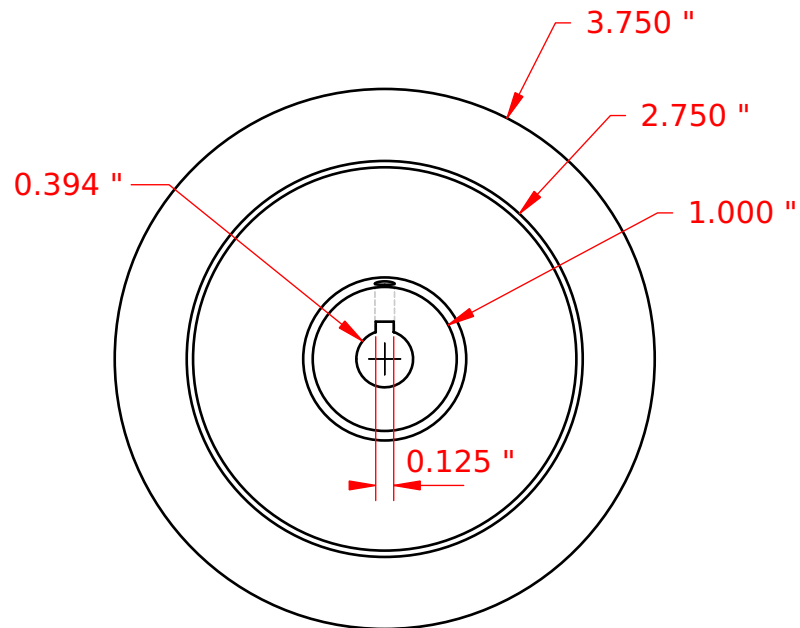
# Flywheel

Mild steel



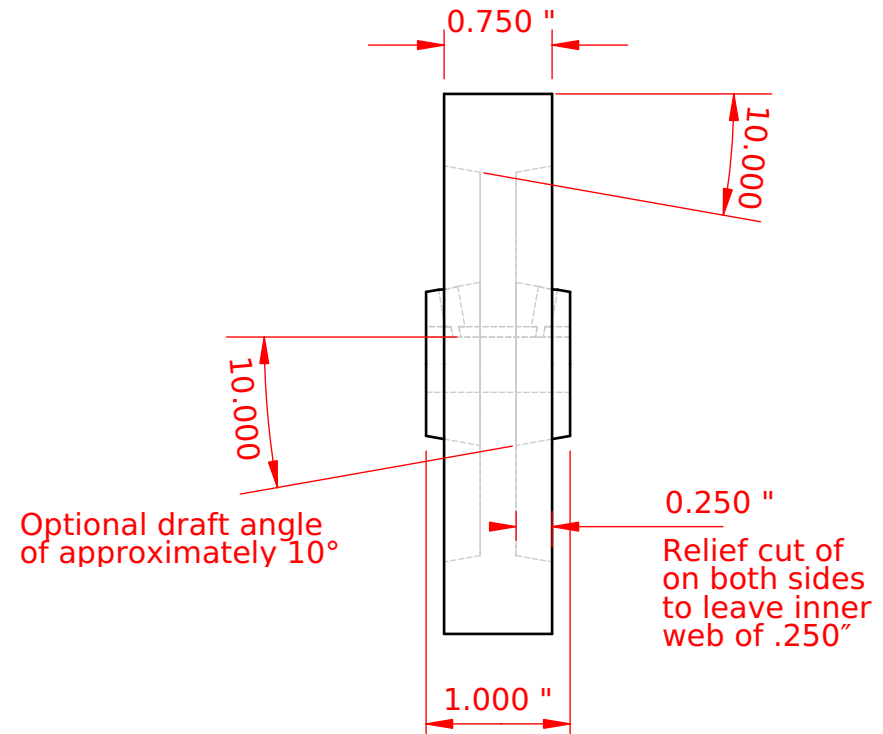
2

2



1

1



Designed by  
Andrew H. Wakefield

Scale  
3:4

Default Dim.  
+/- .001"

Title  
**Steel Webster**

Sheet  
4

Revision  
1.1

Date  
1/10/2020

D

C

B

A